

ASX Release
30 April 2026

Magnum Mining and
Exploration Limited
ABN 70 003 170 376

ASX Code
MGU

OTC Code
MGUFF

Managing Director
Antonio Vitor Junior

Non-Executive Chairman
Michael Davy

Non-Executive Director
Les Pereira

Non-Executive Director
Athan Lekkas

Company Secretary
Mark Pryn

Email
info@mmel.com.au

Website
www.mmel.com.au

Level 1, 180 Albert Road
South Melbourne VIC 3205
AUSTRALIA

T +61 3 9862 2966

QUARTERLY ACTIVITIES REPORT

For the Period Ending 31 March 2026

Magnum Mining & Exploration Limited (ASX: **MGU**) (**Magnum** or the **Company**) is pleased to provide a summary of its activities.

HIGHLIGHTS

- Standout exploration and desorption results at the Azimuth Project confirmed a **new Ionic Adsorption Clay hosted REE discovery** at the Piracanjuba Prospect in Brazil.
- Piracanjuba returned significant IAC REE intercepts in all drill holes, including **13.5m @ 2,165ppm TREO** from surface and **12.3m @ 1,730ppm TREO** from surface, confirming broad clay-hosted mineralisation (**All holes ended in mineralisation**).
- Desorption testwork returned recoveries of up to **75% TREO** and **94% MREO** under mild leaching conditions and low kinetics (~5 minutes), supporting the IAC nature of the mineralisation and highlighting the potential to recover **high-value strategic REE**.
- Drilling spacing of **up to 5km** intersected near-surface REE mineralisation **in all 13 holes**, indicating a **laterally extensive REE system** across the ~85km² Piracanjuba geophysical footprint.
- Surface geochemical work at the Parker Gold Project in Arizona identified high-grade gold and copper across multiple target areas, with overlimit re-assay results of **142g/t Au** and **178g/t Au** confirming exceptional gold grades at Red Breccia, and up to 18.35% Cu reported.

POST-QUARTER

- Commencement of up to **10,000m auger drill programme** at the Piracanjuba Prospect, with drilling designed to support both a **JORC Exploration Target** and **JORC Mineral Resource Estimate**, subject to results.
- Antonio Vitor Junior appointed Managing Director to lead the next phase of Magnum's growth and in-country exploration activities in Brazil.

Magnum’s Managing Director, Antonio Vitor Junior, commented: “The March quarter represents a defining moment for Magnum, marked by the confirmation of a new Ionic Adsorption Clay REE discovery at Piracanjuba, supported by exceptional assay results and desorption data. We are now moving aggressively to unlock this opportunity, with a ~10,000m drill programme underway designed to rapidly demonstrate the scale and continuity of mineralisation across the 85km² geophysical footprint, where all drill holes to date have intersected REE’s and all ending in mineralisation, with some holes up to 5km apart. Based on results to date, Piracanjuba exhibits the hallmarks of a major clay-hosted REE system with the potential to become a globally significant asset. We look forward to reporting further results to shareholders as the programme advances.”

BRAZIL RARE EARTH ELEMENT (‘REE’) PROJECTS

Palmares REE Project and Azimuth REE Project - Overview

During the Quarter, the Company accelerated exploration across its wholly owned and highly prospective Palmares REE (**Palmares Project**) and Azimuth REE Project (**Azimuth Project**) in Brazil (**Figure 1**).

Of particular note, the Azimuth Project (**Figure 2**) delivered standout exploration and desorption results, confirming a new Ionic Adsorption Clay (IAC) REE discovery at the Piracanjuba Prospect, which comprises the Piracanjuba North, Piracanjuba and Piracanjuba South targets. The Piracanjuba Prospect represents the first three targets tested as part of a broader 19 high-priority target pipeline (**Figure 3**), with the remaining targets continuing to be systematically drill tested and evaluated.



Figure 1 – Magnum’s Azimuth and Palmares REE Projects are located across the states of Bahia, Minas Gerais and Goiás states in south-central Brazil. The area is experiencing intense exploration in this emerging REE region.

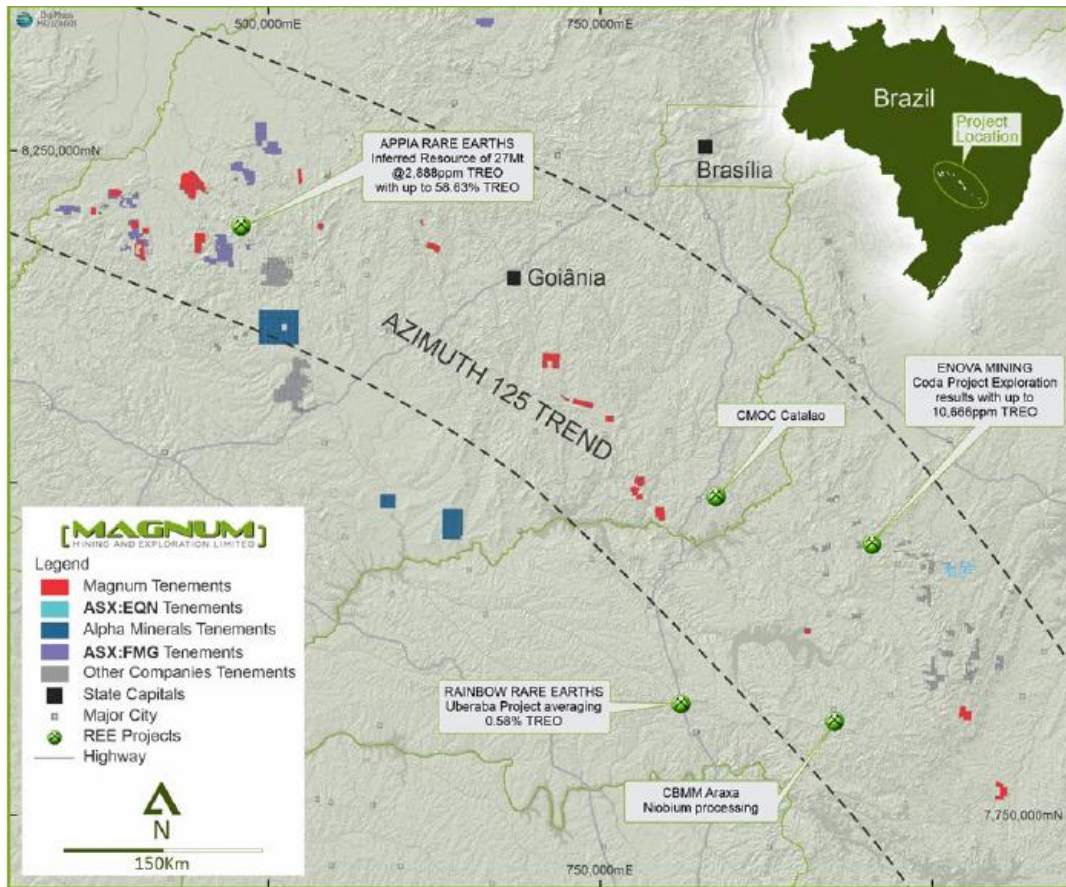


Figure 2 - The Azimuth REE Project is centred on the Azimuth 125° Lineament. The lineament is associated with significant REE mineralisation with Appia, Enova, and Rainbow announcing exploration success. The tenements straddle the NNE trending Transbrasilian Lineament at its intersection with the Azimuth 125° Lineament.



Figure 3 - REE prospects identified on Magnum's Azimuth Project (Yellow dots). The local road network provides easy access to these prospects. Note proximity to the city of Brasília.¹

¹ Refer to ASX release, "Auger Drilling to Start on Brazil Rare Earths Project", 3 October 2025

Palmares Project and Azimuth Project – Drilling Update

During the Quarter, on the 6 January 2026,² Magnum provided an update on its ongoing active drilling activities at the Palmares and Azimuth Projects. The Company reported that shallow RC drilling at the Feirinha REE prospect (**Feirinha**, located at Palmares) had progressed with the resumption of drilling activities on 5 January following a planned Recesso period. (Figure 4)



Figure 4 – Left: RC drilling on the Palmares Project, at the Feirinha Prospect. Right: Field technicians preparing RC drill samples from Feirinha.

By 6 January 2025, 15 holes for 225m had been completed out of a planned 143 holes for 2,145m. It was noted that the speed of the drilling program had been impacted by seasonal rain, which affected access to planned drilling locations. The drilling program at the Feirinha prospect has been designed to assess the high levels of REE in previously reported surface and trench samples³ by testing for lateral continuity and depth extent.

At the Azimuth Project, the Company noted that a total of 155m of the planned 1,665m program had been completed by 6 January 2026. The rate of progress was impacted due to a delay in the mobilisation and commencement of full-time operation of a second auger drill rig.

The first-pass drilling at Azimuth focused on the high priority Piracanjuba Prospect. The Company reported that initial indications were that thick sequences of clays from surface exist. Consequently average drill depths were increased from the previously planned 5m to 12m, with drilling extended where visual soil characteristics indicated prospective horizons consistent with clay layers that are regionally associated with rare earth mineralisation.

Azimuth Project – New Major Potential Large-Scale IAC REE Discovery

On 11 February 2026,⁴ the Company reported assay results from the Piracanjuba Prospect, announcing a new major potential large-scale IAC hosted REE discovery, with drilling intersecting significant REE mineralisation in the untested greenfields area.

² Refer to ASX release, “REE DRILLING AND EXPLORATION ACTIVITIES UPDATE”, 6 January 2026

³ Refer to ASX release, “Two Rig Drill Program Commences at High-Grade REE Prospect”, 1 December 2025

⁴ Refer to ASX release, “POTENTIAL LARGE-SCALE IONIC ADSORPTION CLAY REE DISCOVERY AT FIRST AZIMUTH TARGET”, 11 February 2026

Assay results for the first 13 auger holes returned excellent grades of REE mineralisation within a thick clay section and included:⁴

- AZ125-01-003: 13.5m @ 2,165ppm TREO, 464ppm MREO from surface, including:
 - 3m @ 3,175ppm TREO, 794ppm MREO from 7m
- AZ125-01-002: 12.3m @ 1,730ppm TREO, 395ppm MREO from surface, including:
 - 2m @ 3,282ppm TREO, 1,011ppm MREO from 7m
- AZ125-01-008: 14m @ 1,225ppm TREO, 261ppm MREO from surface, including:
 - 10m @ 1,408ppm TREO, 312ppm MREO from 4m
- AZ125-01-001: 9.6m @ 1,034ppm TREO, 235ppm MREO from surface
- AZ125-01-007: 14m @ 964ppm TREO, 238ppm MREO from surface, including:
 - 5m @ 1,351ppm TREO, 354ppm MREO from 8m
- AZ125-01-009: 9m @ 721ppm TREO, 175ppm MREO from surface, including:
 - 2m @ 1,473ppm TREO, 371ppm MREO from 5m

The drill hole locations were formulated from airborne geophysical data. The geophysical data and the drill results are illustrated for the Piracanjuba North Target (Figure 5), the Piracanjuba target (Figure 6) and the Piracanjuba South target (Figure 7) below.

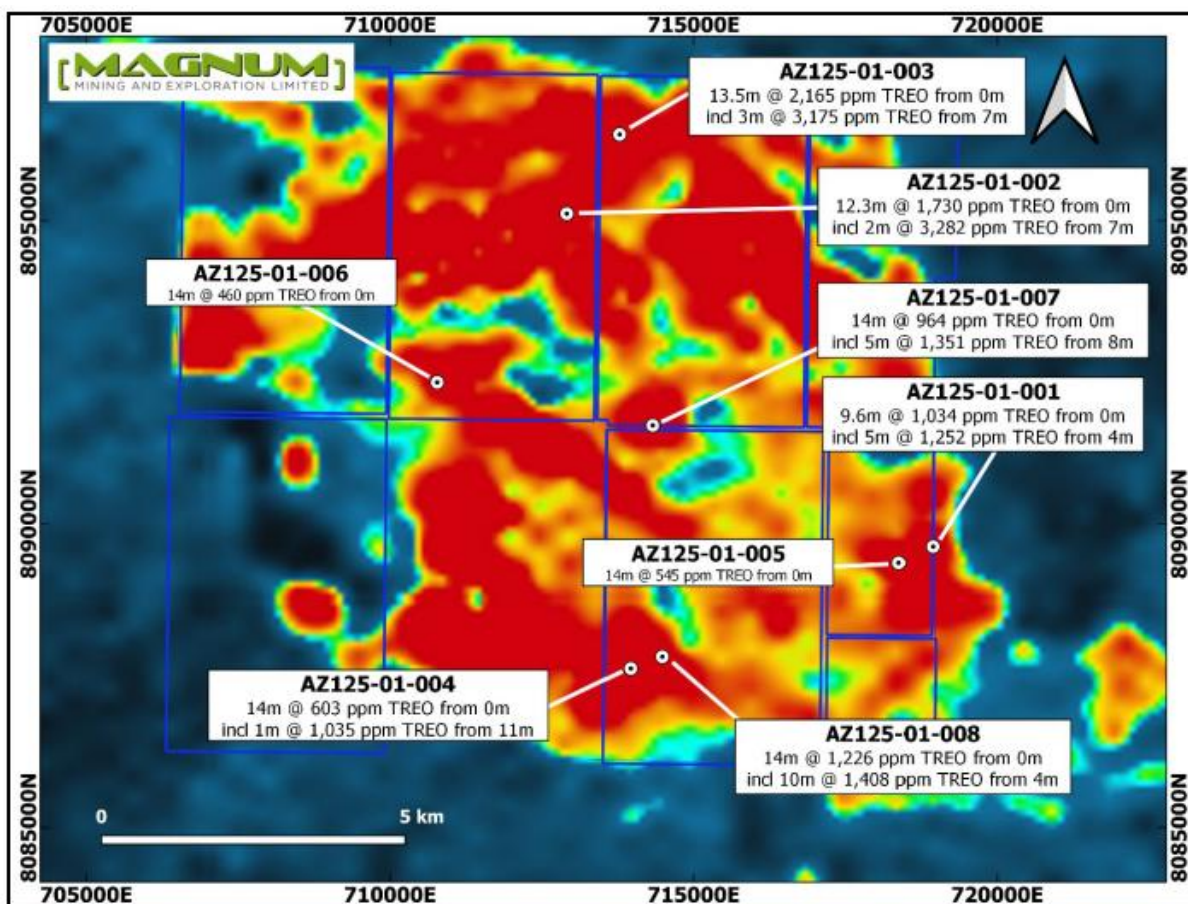


Figure 5 - Piracanjuba North Target auger hole locations and intercepts. Blue outline are Magnum's leases. Background is an image of the thorium channel of an airborne geophysical survey.⁴

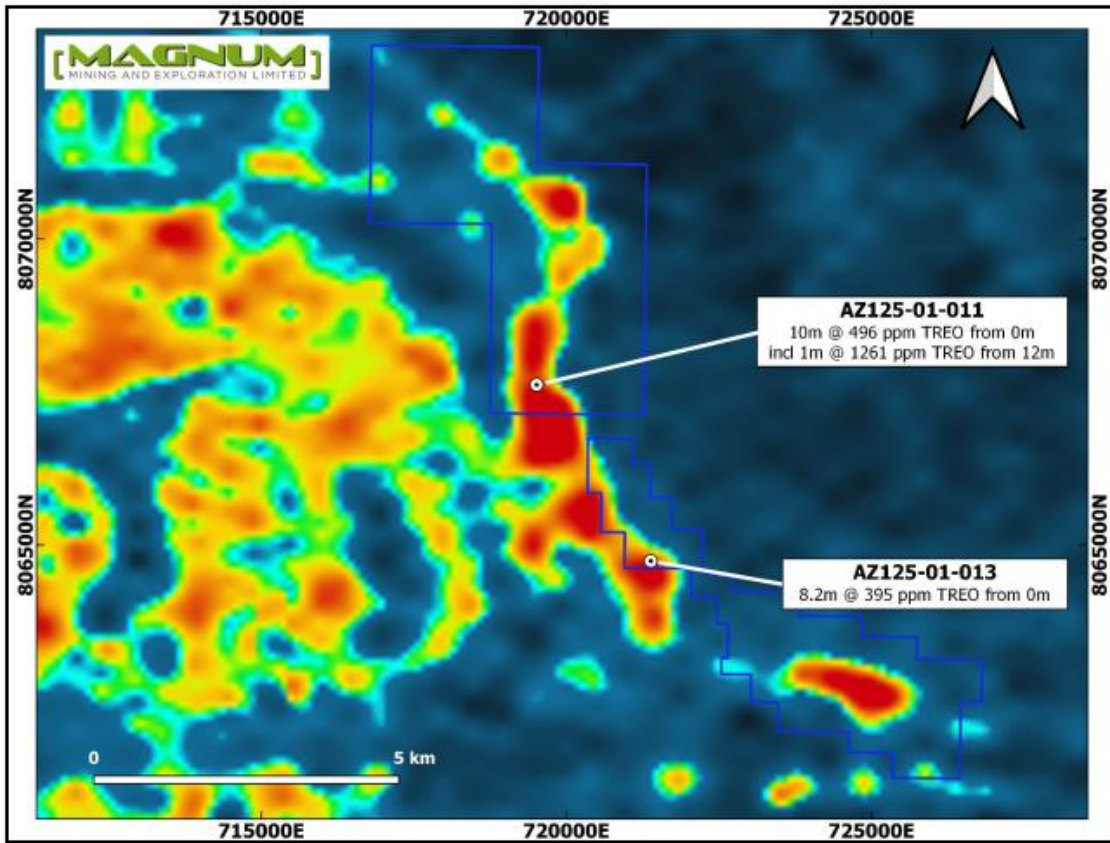


Figure 6 - Piracanjuba Target auger hole locations and intercepts. Blue outline are Magnum's leases. Background is an image of the thorium channel of an airborne geophysical survey.⁴

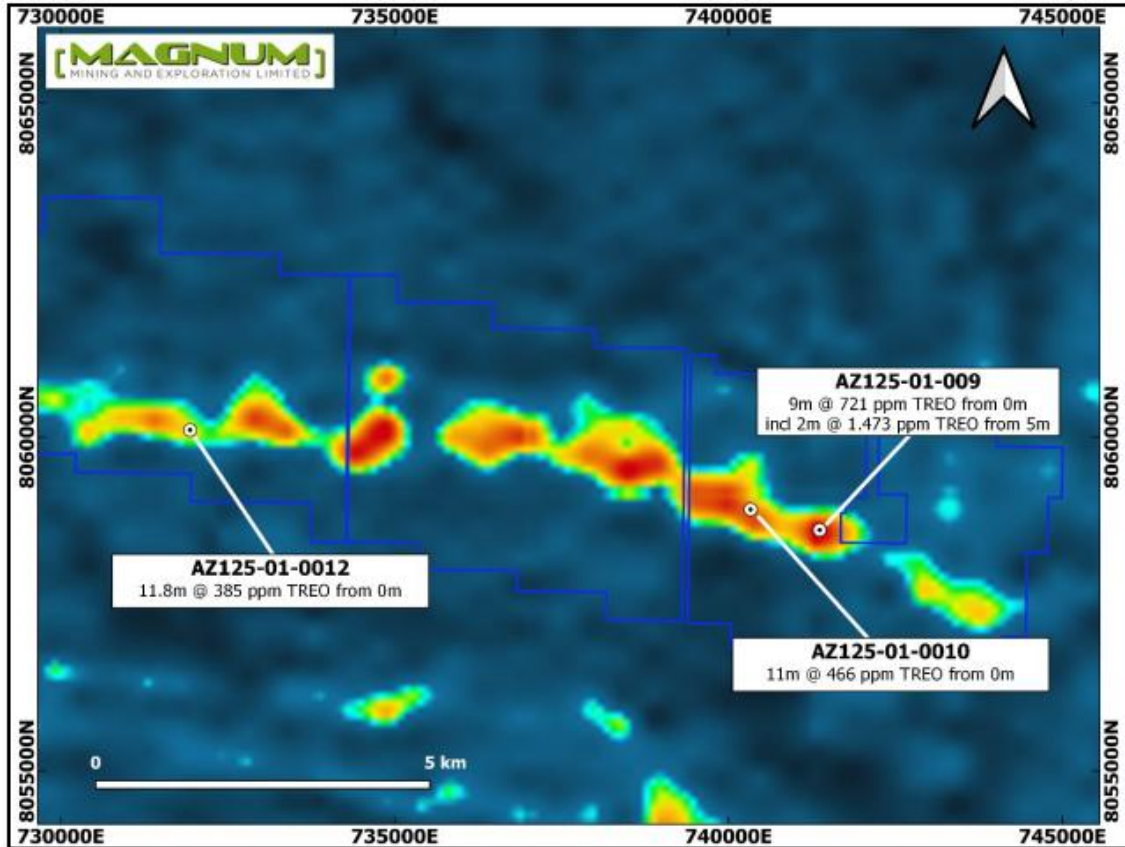


Figure 7 - Piracanjuba South Target auger hole locations and intercepts. Blue outline are Magnum's leases. Background is an image of the thorium channel of an airborne geophysical survey.⁴

Azimuth Project – Desorption results confirm IAC hosted mineralisation

Shortly following the announcement of the discovery, on 19 February 2026,⁵ Magnum announced that desorption results for the REE mineralisation at the Piracanjuba Prospect was consistent with true Ionic Adsorption Clay (IAC) hosted mineralisation. The new discovery represented one of the few confirmed IAC occurrences identified along the Azimuth 125° trend.

Recoveries of up to **75% TREO and 94% MREO** demonstrated the potential to recover high-value strategic rare earth elements under mild leaching conditions, enhancing the prospectivity of the Piracanjuba Prospect (**Table 1 and Table 2**). Significant recovered desorption intercepts include:

- AZ125-01-012: 11.84m @ 45% TREO, **64% MREO, 51% HREO** from 0m,
 - including 6m @ 63% TREO, **88% MREO, 72% HREO** from 4m
 - including 1m @ 75% TREO, **94% MREO, 76% HREO** from 5m
- AZ125-01-002: 3m @ 26% TREO, **53% MREO, 51% HREO** from 4m
- AZ125-01-010: 11m @ 30% TREO, **40% MREO, 42% HREO** from 0m,
 - including: 5m @ 40% TREO, **53% MREO, 56% HREO** from 1m
- AZ125-01-005: 14m @ 31% TREO, **37% MREO, 54% HREO** from 0m
 - including: 8m @ 47% TREO, **57% MREO, 58% HREO**, from 6m
- AZ125-01-008: 5m @ 20% TREO, **34% MREO, 43% HREO** from 4m
- AZ125-01-013: 8.18m @ 26% TREO, **31% MREO, 47% HREO** from 0m
 - including: 2m @ 57% TREO, **71% MREO, 62% HREO** from 5m
- AZ125-01-003: 6m @ 14% TREO, **26% MREO, 28% HREO** from 5m
- AZ125-01-004: 14m @ 15% TREO, **23% MREO, 31% HREO** from 0m
 - including: 1m @ 20% TREO, **35% MREO, 51% HREO** from 11m
- AZ125-01-006: 14m @ 23% TREO, **29% MREO, 40% HREO** from 0m:
 - including 5m @ 42% TREO, **54% MREO, 59% HREO** from 8m

Hole	Interval (m)	From (m)	TREO (ppm)	MREO (ppm)	HREO (ppm)	MREO	Desorption recovery TREO%	Desorption recovery MREO%	Desorption recovery HREO%
AZ125-01-001	9.64	0	1034	235	81	23%	9	15	37
Including	5	4	1252	312	108	25%	11	21	24
AZ125-01-002	12.25	0	1730	395	92	22%	8	16	36
including	3	4	1710	393	93	19%	26	53	51
AZ125-01-003	13.5	0	2095	453	84	22%	8	14	28
including	6	5	2879	677	120	24%	14	26	28
AZ125-01-004	14	0	603	125	77	21%	15	23	31
including	1	11	1035	221	98	21%	20	35	51
AZ125-01-005	14	0	535	136	96	25%	31	37	54
including	8	6	538	137	132	26%	47	57	58
AZ125-01-006	14	0	460	114	66	25%	23	29	40
including	5	8	392	107	83	27%	42	54	59
AZ125-01-007	14	0	964	238	74	25%	6	10	18
AZ125-01-008	14	0	1225	261	80	21%	10	16	22
including	5	4	1413	319	199	22%	20	34	43
AZ125-01-009	9	0	721	175	69	24%	10	13	18
including	2	3	475	123	85	24%	41	54	65
AZ125-01-010	11	0	466	108	91	23%	30	40	43
including	5	1	571	150	103	26%	40	53	56
AZ125-01-011	10	0	496	77	49	16%	10	14	34
AZ125-01-012	11.8	0	364	87	93	23%	45	64	51
including	6	4	482	123	132	26%	63	88	72
including	1	5	482	123	132	26%	75	94	76
AZ125-01-013	8.2	0	401	107	88	37%	26	31	46
including	2	4	555	164	148	30%	57	71	62

Table 1 - Summary of desorption recoveries from the Piracanjuba Prospect.

⁵ Refer to ASX announcement, "IONIC ADSORPTION CLAY DISCOVERY CONFIRMED AT AZIMUTH", 19 February 2026

Hole	Interval (m)	From (m)	TREO (ppm)	MREO (ppm)	TREO desorption recovery (ppm)	MREO desorption recovery (ppm)
AZ125-01-001	9.64	0	1034	235	95	39
<i>including</i>	5	4	1252	313	137	61
AZ125-01-002	12.3	0	1730	395	155	60
<i>including</i>	2	7	3282	1011	73	27
AZ125-01-003	13.5	0	2165	464	200	83
<i>including</i>	3	7	3175	794	461	201
AZ125-01-004	14	0	603	125	89	31
<i>including</i>	1	11	1035	221	205	77
AZ125-01-005	14	0	545	136	163	50
AZ125-01-006	14	0	460	114	94	30
AZ125-01-007	14	0	964	238	53	21
<i>including</i>	5	8	1351	354	41	16
AZ125-01-008	14	0	1225	261	128	49
<i>including</i>	10	4	1408	312	169	66
AZ125-01-009	9	0	721	175	54	18
<i>including</i>	2	5	1473	371	39	13
AZ125-01-010	11	0	466	108	145	47
AZ125-01-011	10	0	496	77	37	10
<i>including</i>	1	2	1261	73	35	8
AZ125-01-012	11.8	0	385	92	196	70
AZ125-01-013	8.2	0	395	104	123	44

Table 2 - Significant intercepts from the Piracanjuba Prospects auger drilling programme. The TREO total is a summation of CeO₂, Dy₂O₃, Er₂O₃, Eu₂O₃, Gd₂O₃, Ho₂O₃, La₂O₃, Lu₂O₃, Nd₂O₃, Pr₆O₁₁, Sm₂O₃, Tb₄O₇, Tm₂O₃, Y₂O₃, and Yb₂O₃. HREO is a summation of Dy₂O₃ Er₂O₃ Gd₂O₃ Ho₂O₃ Lu₂O₃ Tb₄O₇ Tm₂O₃ Y₂O₃ and Yb₂O₃. MREO is a summation of: Dy₂O₃, Nd₂O₃, Pr₆O₁₁, and Tb₄O₇. All assays rounded to nearest integer.

Azimuth Project – 10,000m Auger Drill Program Launched

During the Quarter, on 19 March 2026,⁶ announced that it intended to launch an auger drilling program at the Piracanjuba prospect of up to 10,000m. Following the end of the Quarter, on 10 April 2026,⁷ the Company announced that this drilling programme has now commenced. The drilling programme is planned across all three Piracanjuba targets (Piracanjuba North, Piracanjuba and Piracanjuba South) and consists of two sets of grids:

- 1) **1000m x 1000m grid drilling program:** Designed to test the lateral extent of REE mineralisation across the Piracanjuba prospect and potentially support the definition of a JORC Exploration Target.
- 2) **200m x 200m grid drilling program:** Centred on previously reported REE intercepts,⁴ with the objective of progressing toward a JORC-compliant Mineral Resource Estimate (**MRE**).

Targets	200m x 200m	1000m x 1000m
Piracanjuba North	462 holes	112 holes
Piracanjuba & Piracanjuba South	190 holes	66 holes

Table 3 - Planned drilling programme at the Piracanjuba Prospect.

The drilling programme has been designed with reference to initial drilling results, where holes spaced up to 5km apart intersected near-surface REE mineralisation in all 13 holes. The results to date indicate a laterally extensive REE system across the ~85km² Piracanjuba geophysical footprint.

⁶ Refer to ASX release, “10,000m AUGER DRILL PROGRAM TO FOLLOW-UP IONIC ADSORPTION CLAY DISCOVERY”, 19 March 2026

⁷ Refer to ASX release, “LARGE-SCALE DRILL PROGRAMME LAUNCHED AT BRAZIL IONIC ADSORPTION CLAY REE DISCOVERY”, 10 April 2026

U.S.A PROJECTS

PARKER GOLD PROJECT – IDENTIFICATION OF HIGH PRIORITY TARGETS

During the Quarter, on 5 March 2026,⁸ the Company reported that the interpretation of the ultra-high resolution aeromagnetic and radiometric survey completed over the Parker Gold Project (**Figure 10**) had identified high priority targets for gold and copper exploration on the Red Breccia – Eagle Nest blocks (**Figure 11**)



Figure 10 - The location of the Parker Gold and La Cienega Projects in Arizona, USA. The projects sit at the intersection of the Walker Trend and the Colorado River Extension Zone, both areas of intensive and extensive gold, copper, and REE exploration.

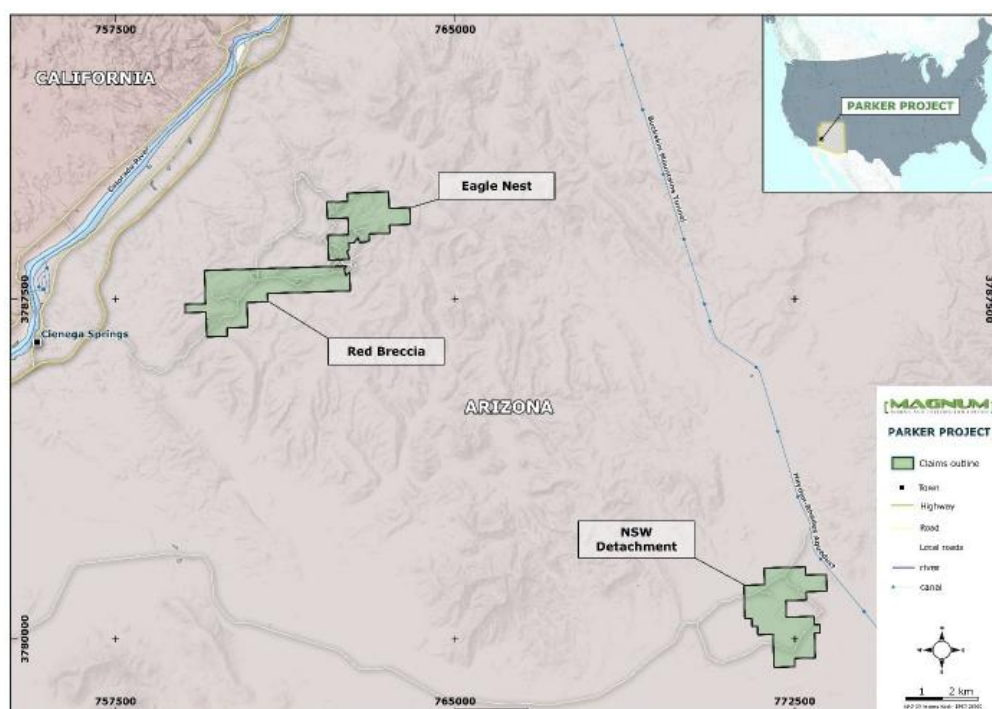


Figure 11 - Location of the Red Breccia, Eagle Nest and NSW Detachment areas at the Parker Project, Arizona.

⁸ Refer to ASX release, "GEOPHYSICAL INTERPRETATION IDENTIFIES HIGH PRIORITY GOLD & COPPER TARGETS", 5 March 2026

The Company reported that the high-resolution survey was flown at a line spacing of 40m and a nominal altitude of 20m using a helicopter platform. Three claims blocks were covered: the Red Breccia and the Eagle Nest blocks and the NSW Detachment block (**Figure 11**). The survey was flown to assist in mapping the structural, lithological, and alteration architecture that may control where copper–gold systems develop. Four High Priority exploration targets have been identified in the interpretation (**Table 4, Figure 12**):

Target	Style	Priority
Ⓐ	Large potassic zone of demagnetisation	High
Ⓑ	Zone of demagnetisation along strike of the Eagle Nest historic Cu-Au mine and in the haematite breccia overlying it	High
Ⓒ	Zone of demagnetisation in the Red Breccia	High
Ⓓ	Small magnetic high on a significant north-east trending fault	Low
Ⓔ	Similar magnetic and radiometric character to the Eagle Nest Mine and along strike from it	High
Ⓕ	Zone of demagnetisation in a structural corridor hosting historic workings	Medium

Table 4 - Targets identified in the interpretation of the Parker aeromagnetic and radiometric survey

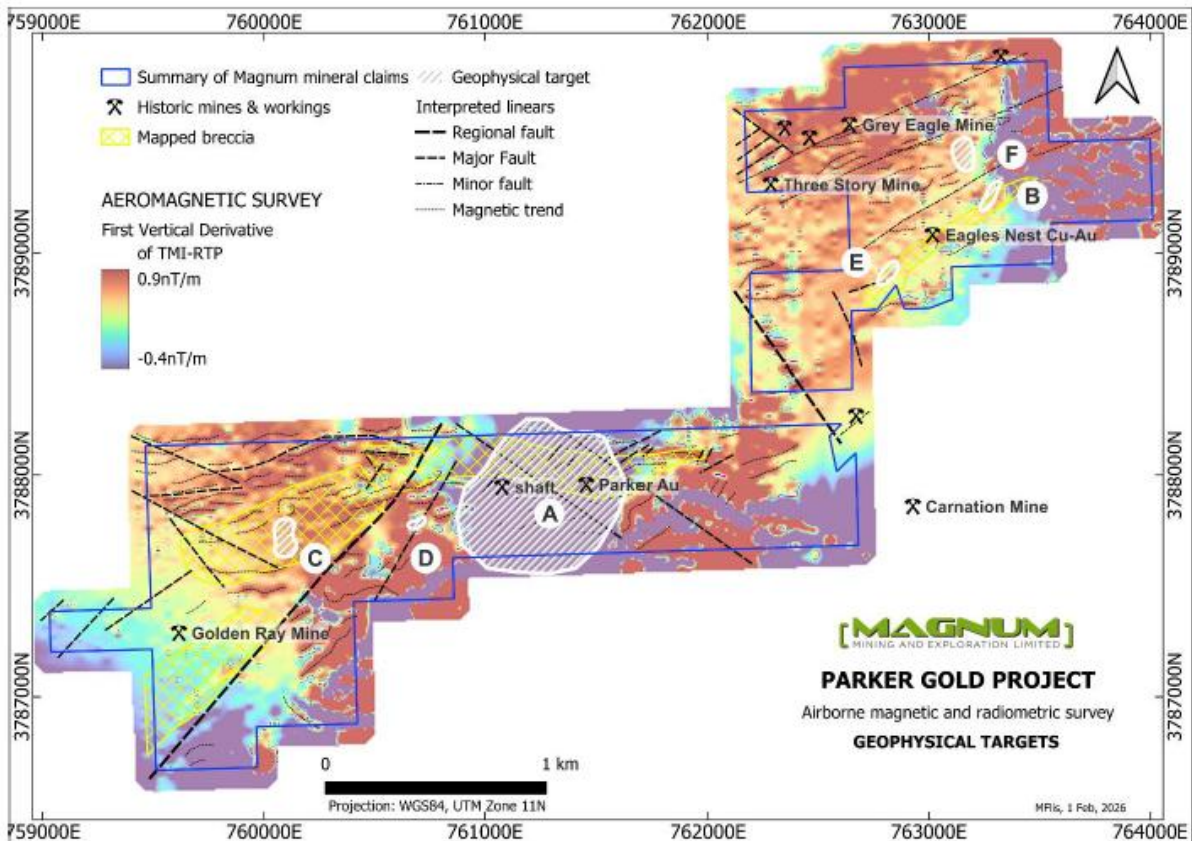


Figure 12 - Targets interpreted from the aeromagnetic and radiometric survey over the Parker Copper-Gold project.

PARKER GOLD PROJECT – SURFACE GEOCHEMICAL PROGRAM, OVERLIMIT GOLD RESULTS OF >100G/T AU AND FINAL OVERLIMIT ASSAY RESULTS

During the Quarter, on 12 March 2026,⁹ the Company announced details from its geological reconnaissance and surface geochemical programme at the Parker Project in La Paz County, Arizona, USA. The program comprised reconnaissance mapping, systematic soil sampling and targeted rock chip sampling.

On the 24 March 2026,¹⁰ the Company reported on new assay results from this programme, which returned high-grade gold and copper from Eagle Nest, Red Breccia and NSW Detachment, confirming and extending key interpreted mineralised corridors and structures across the Project. The results included two gold values which reached overlimit results of >100g/t and were sent for re-assay, which were subsequently reported to market following the end of Quarter.¹¹ Highlight results from the program are illustrated in **Table 5** and **Figure 13**, **Figure 14** and **Figure 15** below.

Eagle Nest	Red Breccia	NSW Detachment
91.6g/t Au & 6.39% Cu <i>(Sample 51013)</i>	178g/t Au & 18.30% Cu <i>(Sample 51101)</i>	37.5g/t Au & 12.85% Cu <i>(Sample 51028)</i>
38.0g/t Au & 4.44% Cu <i>(Sample 51095)</i>	142g/t Au & 0.16% Cu <i>(Sample 51059)</i>	11.1g/t Au & 5.70% Cu <i>(Sample 51021)</i>
37.1g/t Au & 2.83% Cu <i>(Sample 51081)</i>	12.3g/t Au & 8.73% Cu <i>(Sample 51010)</i>	10.2g/t Au & 4.36% Cu <i>(Sample 51029)</i>
36.7g/t Au & 2.11% Cu <i>(Sample 51114)</i>	11.6g/t Au & 6.32% Cu <i>(Sample 51051)</i>	9.17g/t Au & 4.89% Cu <i>(Sample 51019)</i>

Table 5 – Select sample of gold and copper samples, following the receipt of over-limit gold re-assay results for Sample 51101 and 51059.

⁹ Refer to ASX release, “MULTIPLE CONTINUOUS MINERALISED TRENDS DEFINED AT PARKER”, 12 March 2026

¹⁰ Refer to ASX release, “MULTIPLE ASSAYS EXCEED 100g/t GOLD AND UP TO 18.35% COPPER AT PARKER PROJECT IN USA”, 24 March 2026

¹¹ Refer to ASX release, “MULTIPLE OVERLIMIT ASSAYS CONFIRM UP TO 178 g/t GOLD”, 9 April 2026

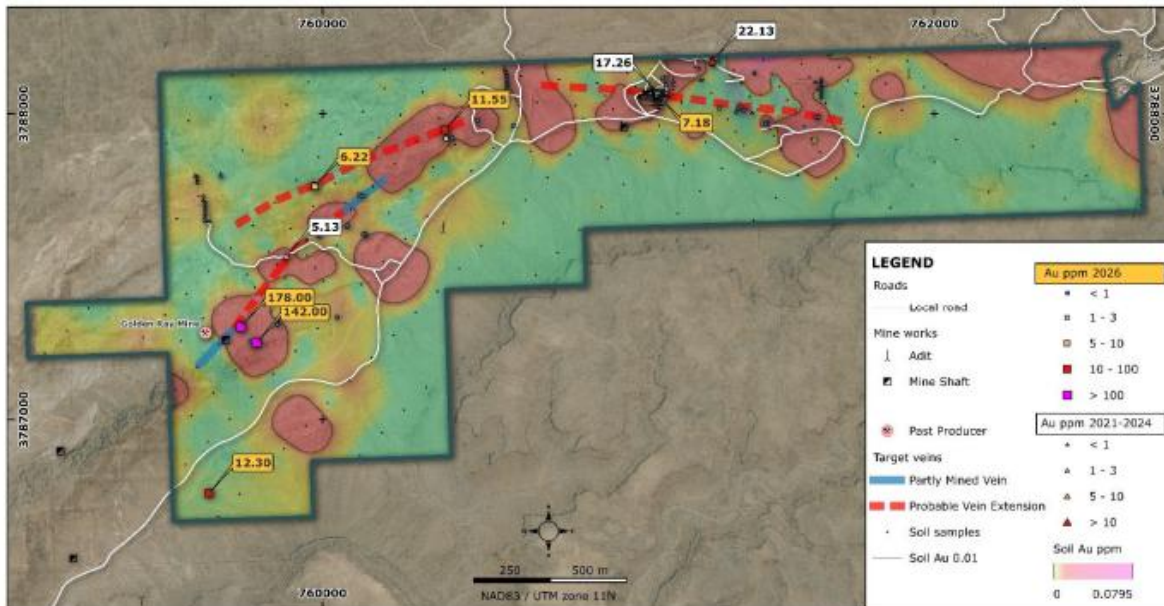


Figure 13 - Red Breccia target areas showing 2021-2024 and 2026 rock-chip gold assay values over the 2026 soil gold anomaly, contoured at 0.01 ppm Au. The map shows the location of the new re-assay results received for samples 51059 and 51101, which returned 142g/t Au and 178g/t Au respectively.¹²

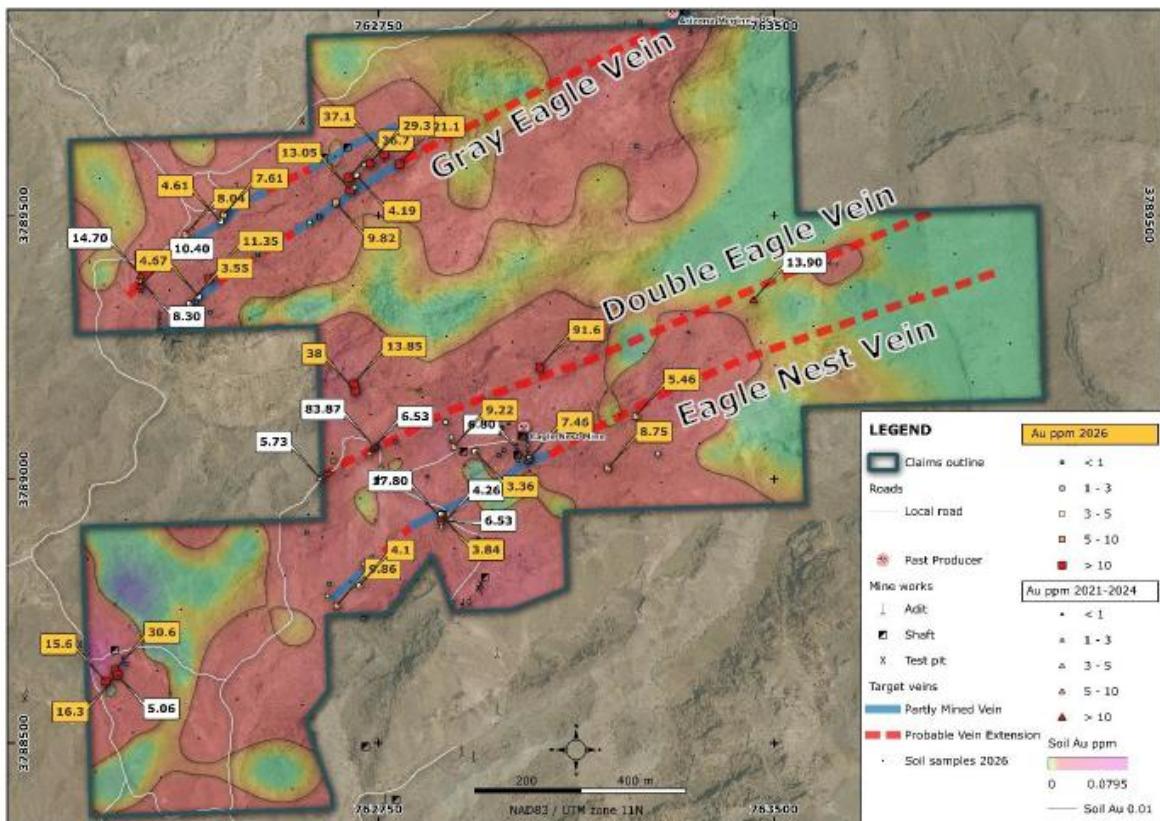


Figure 14 - Eagle Nest target areas showing 2021-2024 (Refer to ASX release, “MULTIPLE CONTINUOUS MINERALISED TRENDS DEFINED AT PARKER”, 12 March 2026), and 2026 rock-chip gold assay values over the 2026 soil gold anomaly, contoured at 0.01 ppm Au.¹³

¹² Refer to ASX release, “MULTIPLE ASSAYS EXCEED 100g/t GOLD AND UP TO 18.35% COPPER AT PARKER PROJECT IN USA”, 9 April 2026

¹³ Refer to ASX release, “MULTIPLE ASSAYS EXCEED 100g/t GOLD AND UP TO 18.35% COPPER AT PARKER PROJECT IN USA”, 24 March 2026

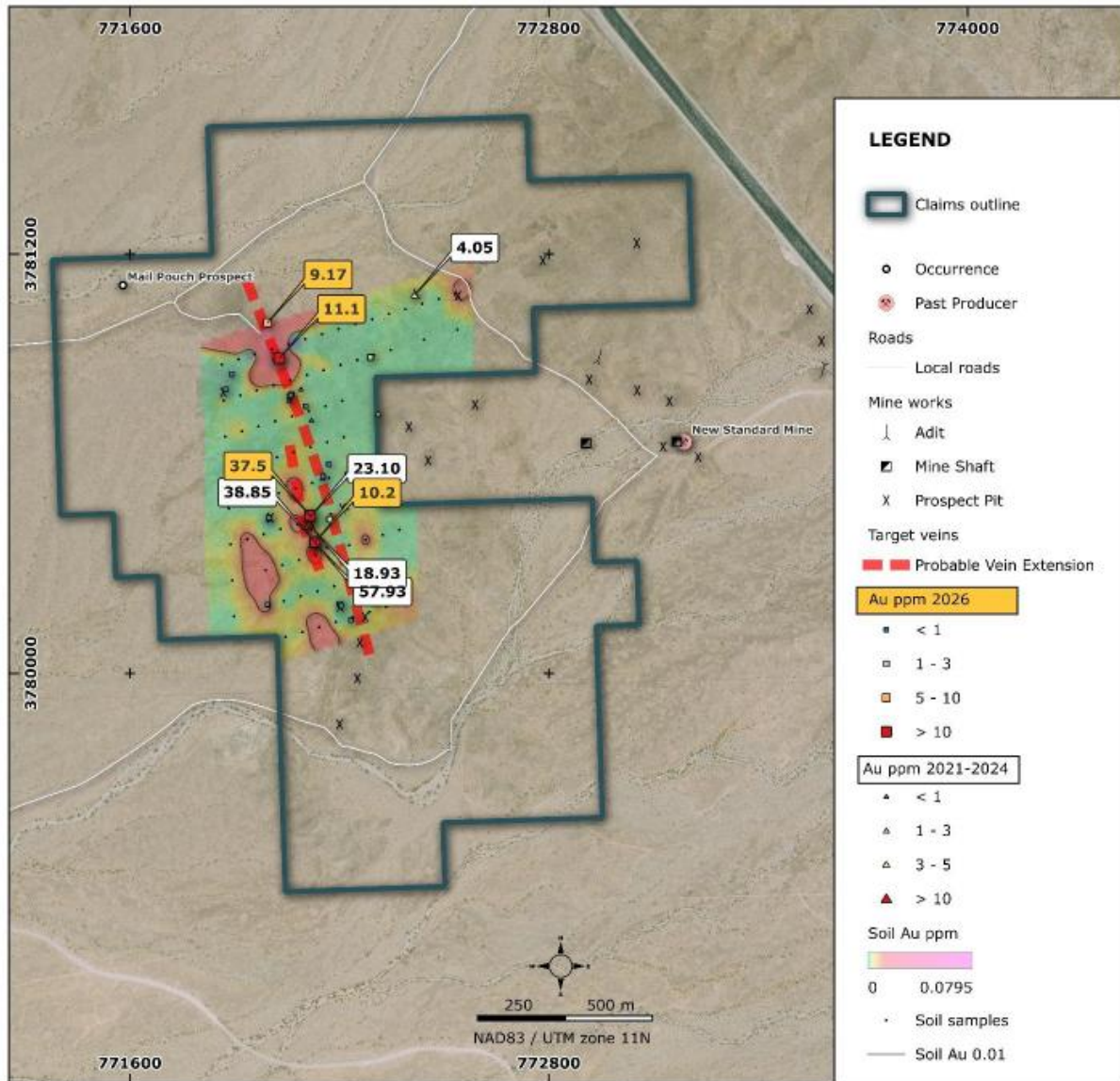


Figure 15 – NSW Detachment target areas showing 2021-2024 (Refer to ASX release, “MULTIPLE CONTINUOUS MINERALISED TRENDS DEFINED AT PARKER”, 12 March 2026) and 2026 rock-chip gold assay values over the 2026 soil gold anomaly, contoured at 0.01 ppm Au.¹⁴

¹⁴ Refer to ASX release, “MULTIPLE ASSAYS EXCEED 100g/t GOLD AND UP TO 18.35% COPPER AT PARKER PROJECT IN USA”, 24 March 2026

WET MOUNTAIN REE PROJECT – ACQUISITION COMPLETE

On 2 February 2026,¹⁵ the Company announced it had completed the acquisition of Wyoming Critical Minerals, Inc. (**WCM**), the sole owner of the Wet Mountain Rare Earth Element (**REE**) Project, a highly prospective REE project located in central Colorado, U.S.A. Magnum confirmed that all conditions precedent had been satisfied and that it was planning a systematic exploration campaign to unlock the Project’s full potential.

The Wet Mountain REE Project exhibits both scale and high-grade surface REE anomalism that is comparable to, or higher than, many early-stage discoveries. The combination of elevated assays, favourable host lithologies, and structural corridors focused at intrusive contacts present multiple high-priority exploration targets for rapid assessment.

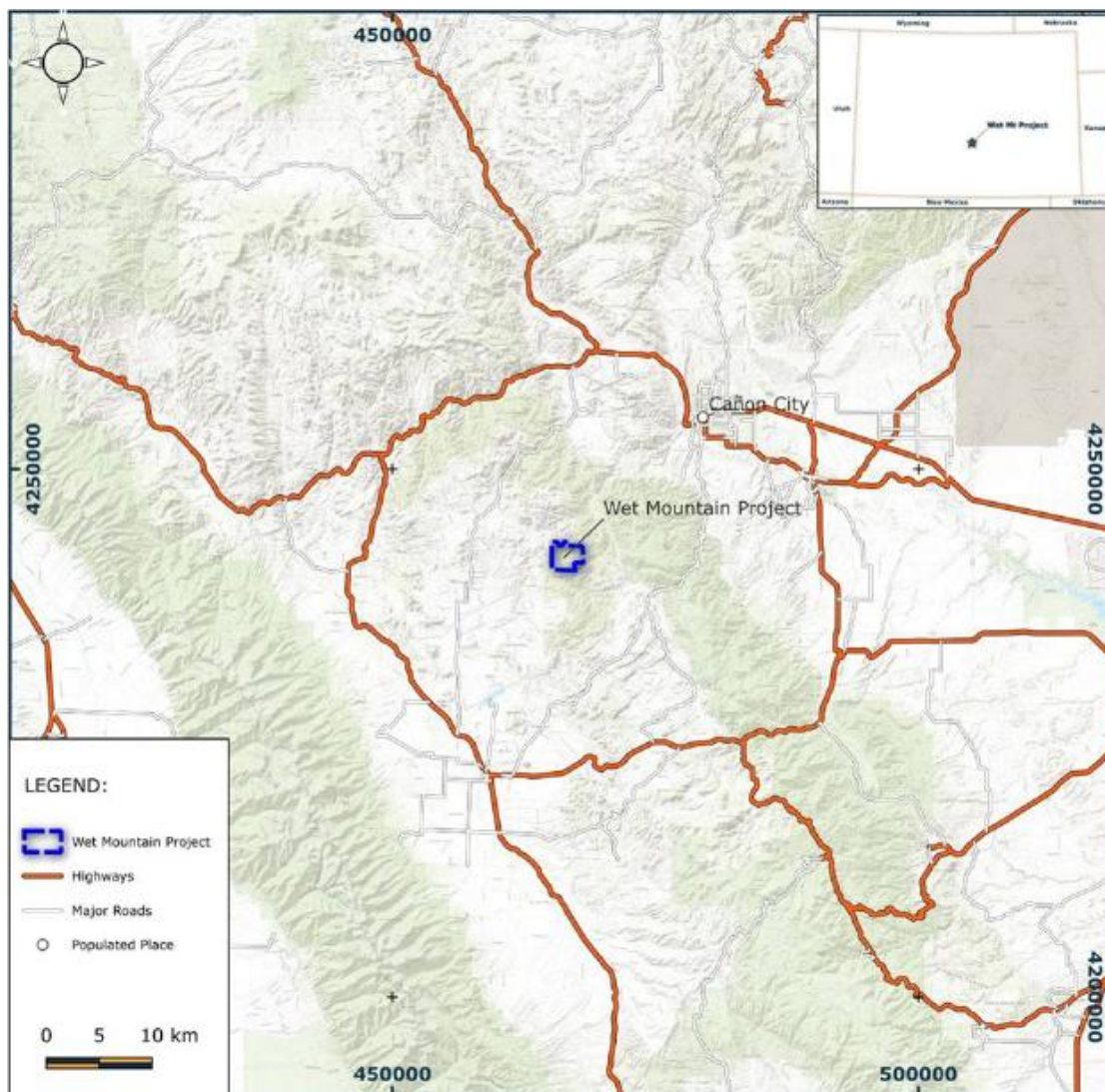


Figure 16 - Wet Mountain REE Project location and infrastructure map, Colorado, USA.

The Wet Mountain area has been historically well known for thorium and uranium mineralisation. Historical exploration has been centred on the Haputa Ranch - a thorium, gold, REE, barium-barite, and lead mine located in Custer County, Colorado. The area has had intensive investigation by the United States Geologic Survey (USGS), particularly in reference to the thorium exploration interest of the 1950s.¹⁶

¹⁵ Refer to ASX release, “High-Grade Wet Mountain REE Acquisition Completion”, 2 February 2026

¹⁶ Armbrustmacher, T.J., 1988, Geology and resources of thorium and associated elements in the Wet Mountains area, Fremont and Custer Counties, Colorado: U.S. Geological Survey Professional Paper 1049-F, 34p.

As part of those investigations, areas of exceptional grades of REE mineralisation were defined by surface sampling of outcropping carbonatite dykes.¹⁷ In the area of the Wet Mountain claims, up to 7.99% (79,900ppm) Total Rare Earth Elements (TREE) were delineated with zones of over 1% TREE being evident (Figure 2)¹⁸:

Sample ID	Easting (m)	Northing (m)	La ppm	Ce ppm	Pr ppm	Nd ppm	Sm ppm	Eu ppm	Gd ppm	Dy ppm	Ho ppm	Er ppm	Tm ppm	Yb ppm	Y ppm	TREE ppm	TREE %
75A-217	467081	4242338	10000	10000	1500	5000	700	150	200	200	20	0	0	15	300	28085	2.81
75A-218	466346	4241256	15000	15000	2000	7000	1000	300	300	200	30	0	0	15	300	41145	4.11
75A-219	466616	4241021	10000	10000	1500	5000	1000	150	300	200	30	0	0	50	700	28930	2.89
75A-220	466650	4241173	5000	5000	500	3000	700	150	500	300	50	0	0	20	1000	16220	1.62
75A-221	466921	4242514	30000	20000	5000	20000	2000	300	700	500	100	200	30	70	1000	79900	7.99
76A-444	467780	4241714	700	0	0	0	700	0	0	0	0	0	0	7	70	1477	0.15

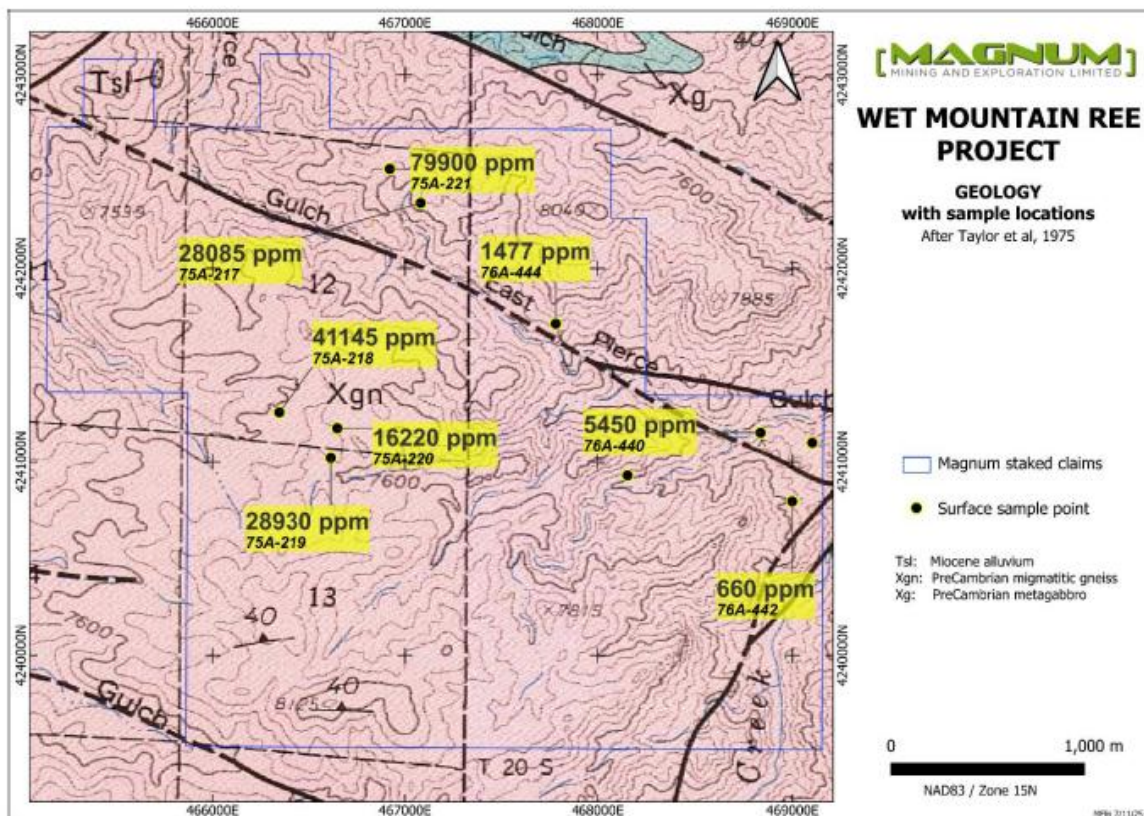


Figure 17 - Surface TREE assays on the Wet Mountain REE Project. Assays of up to 79,900ppm (7.99%) TREE are evident. Geology is after Taylor et al (1975).

Terbium (Tb) and Lutetium (Lu) assays were not assessed. A heavy REE (HTREE) component of up to 1,900 ppm and up to 5,000 ppm Pr, 20,000 ppm Nd, and 2,000 ppm Sm are noted. On this basis, the area has the potential to host a commercially viable REE deposit.

Cautionary Statement: The results quoted here are based on historic sampling collected and assayed by the USGS. While primary information has been sourced and cited, the results must be treated with caution until the area is resampled using modern techniques and assayed using industry standard procedures and QA/QC controls. The reader is cautioned that the grades are conceptual in nature and it is uncertain if further exploration will confirm these results. It is recommended that investors consult with a qualified professional to assess the risks associated with investing in projects that use historical results.

¹⁷ Armbrustmacher, T.J., and Brownfield, I.K., 1978, Carbonatites in the Wet Mountains area, Custer and Fremont Counties, Colorado: Chemical and mineralogical data: U.S. Geological Survey Open-File Report 78-177, 7 p.

¹⁸ Taylor, R. B., Scott, G. R., Wobus, R. A., and Epis, R. C., 1975, Reconnaissance geologic map of the Cotopaxi 15-minute quadrangle, Fremont and Custer Counties, Colorado: U.S. Geol. Survey Map 1-900.

CORPORATE

BOARD & MANAGEMENT CHANGES TO ACCELERATE GROWTH

During the Quarter, on 10 March 2026,¹⁹ announced the proposed appointment of Mr Antonio Vitor Junior as a Non-Executive Director of the Company. Following the end of the Quarter, on 15 April 2026,²⁰ the Company announced the appointment of Antonio Vitor Junior as Managing Director, effective 1 April 2026.

Mr Vitor Junior is a Brazilian mining executive with extensive experience in rare earth discovery and in-country project leadership. He has been directly involved in the discovery and advancement of ionic adsorption clay (IAC) style rare earth mineralisation in Goiás State, Brazil, and brings hands-on operational capability across exploration execution, stakeholder engagement and project development.

Mr Vitor Junior was instrumental to the discovery and advancement of the PCH Project, located within the Azimuth 125° lineament. He has previously served as Country Manager of Appia Rare Earths and Uranium Corp (CNSX:API) and as Managing Director of Ultra Rare Earth Inc, with experience spanning grassroots REE exploration through to development planning.

In addition to his REE experience, Mr Vitor Junior is Chief Executive Officer of Bahia Graphite Corp, which has executed a Letter of Intent with Marubeni Corporation, Director Manager of AMA Gold in Goiás State, Country Manager of Homerun Resources Inc, and Country Manager of Brasnova Inc, which holds copper, manganese, phosphate and titanium projects.

Mr Vitor Junior holds a degree in Business Administration, an MBA and is a Member of the Brazilian Institute of Corporate Governance.

STRATEGIC ALIGNMENT AND BOARD OPTIMISATION

In addition, the Company noted that it was its prioritising core assets with the highest potential for delivering exploration success while continuing to assess opportunities to realise shareholder value across its broader project portfolio. As part of this strategic focus, Magnum's noted that its main objective is to systematically advance its Azimuth REE and Palmares REE projects in Brazil, with the appointment of Mr Vitor Junior as Managing Director supporting the acceleration of in-country exploration activities.

APPENDIX 5B

Appendix 5B for the period is as attached.

The cash balance at the end of Q1 was \$4.9m (Q4: \$5.9m).

Net cash outflows from operating activities for Q1 were \$0.9m

The major cash movements during the quarter included:

- payments for tenements acquired of \$0.1m, and
- payments for exploration and evaluation of \$0.6m including land holding costs geology, research and development and REE drilling in Brazil,

In accordance with ASX Listing Rule 5.3, the Company advises that there were no substantive mining development or production activities conducted during the quarter.

¹⁹ Refer to ASX release, "BOARD APPOINTMENT TO SUPPORT BRAZILIAN RARE EARTH STRATEGY", 10 March 2026

²⁰ Refer to ASX release, "NEW MANAGING DIRECTOR TO LEAD MAGNUM'S GROWTH AHEAD OF MAJOR DRILL PROGRAMS", 15th April 2026.

Tenement Table: ASX Listing Rule 5.3.3

Mining tenement interests held at the end of the quarter and their location:

Refer to Appendixes 1-5 below.

Mining tenement interests relinquished during the quarter and their location:

Tenement Reference	Location	Nature	Status	Interest
860.239/2024	Brazil	Direct	Relinquished	100%
860.240/2024	Brazil	Direct	Relinquished	100%

Mining tenement interests acquired during the quarter and their location:

Tenement Reference	Location	Nature	Status	Interest
860.104/2026	Brazil	Direct	Granted	100%
860.105/2026	Brazil	Direct	Granted	100%
860.148/2026	Brazil	Direct	Granted	100%

In addition to the above tenements, refer to Appendix 5 attached, which were acquired as part of the Company's Wyoming Critical Minerals, Inc. acquisition.

Mining tenement interests under application during the quarter and their location:

Tenement Reference	Location	Nature	Status	Interest
860.106/2026	Brazil	Direct	Applied - Pending	100%
860.139/2026	Brazil	Direct	Applied - Pending	100%
860.140/2026	Brazil	Direct	Applied - Pending	100%
860.142/2026	Brazil	Direct	Applied - Pending	100%
860.143/2026	Brazil	Direct	Applied - Pending	100%
860.144/2026	Brazil	Direct	Applied - Pending	100%
860.145/2026	Brazil	Direct	Applied - Pending	100%
860.146/2026	Brazil	Direct	Applied - Pending	100%
860.147/2026	Brazil	Direct	Applied - Pending	100%
860.149/2026	Brazil	Direct	Applied - Pending	100%
860.150/2026	Brazil	Direct	Applied - Pending	100%

Payments to related parties during Q4 were \$57,000.

This document has been authorised for release to the ASX by the Company's Board of Directors.

Further information please contact:

Mark Pryn
Company Secretary
 +61 3 9862 2966
info@mmel.com.au

Erik Bergseng, CFA®
Investor Relations
 +61 2 8350 0882
ebergseng@nrinvestor.com.au

No New Information

The information in the referenced announcements footnoted above (and listed below) that relate to Exploration Results has previously been released to the ASX. The Company confirms that it is not aware of any information or data that materially affects the information included in the market announcements, and that all material assumptions and technical parameters underpinning the announcements continue to apply. The Company confirms that the form and context in which the Competent Person's findings are presented have not been materially modified from the original market announcements.

ASX Announcements & other Information referenced in this Quarterly activities release, for each footnote

1. Refer to ASX release, "Auger Drilling to Start on Brazil Rare Earths Project", 3 October 2025
2. Refer to ASX release, "REE DRILLING AND EXPLORATION ACTIVITIES UPDATE", 6 January 2026
3. Refer to ASX release, "Two Rig Drill Program Commences at High-Grade REE Prospect", 1 December 2025
4. Refer to ASX release, "POTENTIAL LARGE-SCALE IONIC ADSORPTION CLAY REE DISCOVERY AT FIRST AZIMUTH TARGET", 11 February 2026
5. Refer to ASX announcement, "IONIC ADSORPTION CLAY DISCOVERY CONFIRMED AT AZIMUTH", 19 February 2026
6. Refer to ASX release, "10,000m AUGER DRILL PROGRAM TO FOLLOW-UP IONIC ADSORPTION CLAY DISCOVERY", 19 March 2026
7. Refer to ASX release, "LARGE-SCALE DRILL PROGRAMME LAUNCHED AT BRAZIL IONIC ADSORPTION CLAY REE DISCOVERY", 10 April 2026
8. Refer to ASX release, "GEOPHYSICAL INTERPRETATION IDENTIFIES HIGH PRIORITY GOLD & COPPER TARGETS", 5 March 2026
9. Refer to ASX release, "MULTIPLE CONTINUOUS MINERALISED TRENDS DEFINED AT PARKER", 12 March 2026
10. Refer to ASX release, "MULTIPLE ASSAYS EXCEED 100g/t GOLD AND UP TO 18.35% COPPER AT PARKER PROJECT IN USA", 24 March 2026
11. Refer to ASX release, "MULTIPLE OVERLIMIT ASSAYS CONFIRM UP TO 178 g/t GOLD", 9 April 2026
12. Refer to ASX release, "MULTIPLE ASSAYS EXCEED 100g/t GOLD AND UP TO 18.35% COPPER AT PARKER PROJECT IN USA", 9 April 2026
13. Refer to ASX release, "MULTIPLE ASSAYS EXCEED 100g/t GOLD AND UP TO 18.35% COPPER AT PARKER PROJECT IN USA", 24 March 2026
14. Refer to ASX release, "MULTIPLE ASSAYS EXCEED 100g/t GOLD AND UP TO 18.35% COPPER AT PARKER PROJECT IN USA", 24 March 2026
15. Refer to ASX release, "High-Grade Wet Mountain REE Acquisition Completion", 2 February 2026
16. Armbrustmacher, T.J., 1988, Geology and resources of thorium and associated elements in the Wet Mountains area, Fremont and Custer Counties, Colorado: U.S. Geological Survey Professional Paper 1049-F, 34p.
17. Armbrustmacher, T.J., and Brownfield, I.K., 1978, Carbonatites in the Wet Mountains area, Custer and Fremont Counties, Colorado: Chemical and mineralogical data: U.S. Geological Survey Open-File Report 78-177, 7 p.
18. Taylor, R. B., Scott, G. R., Wobus, R. A., and Epis, R. C., 1975, Reconnaissance geologic map of the Cotopaxi 15-minute quadrangle, Fremont and Custer Counties, Colorado: U.S. Geol. Survey Map 1-900.
19. Refer to ASX release, "BOARD APPOINTMENT TO SUPPORT BRAZILIAN RARE EARTH STRATEGY", 10 March 2026

20. Refer to ASX release, “NEW MANAGING DIRECTOR TO LEAD MAGNUM’S GROWTH AHEAD OF MAJOR DRILL PROGRAMS”, 15th April 2026.

Disclaimer

Forward-looking statements are statements that are not historical facts. Words such as “expect(s)”, “feel(s)”, “believe(s)”, “will”, “may”, “anticipate(s)”, “potential(s)” and similar expressions are intended to identify forward-looking statements. These statements include, but are not limited to statements regarding future production, resources or reserves and exploration results. All of such statements are subject to certain risks and uncertainties, many of which are difficult to predict and generally beyond the control of the Company, that could cause actual results to differ materially from those expressed in, or implied or projected by, the forward-looking information and statements. These risks and uncertainties include, but are not limited to: (i) those relating to the interpretation of drill results, the geology, grade and continuity of mineral deposits and conclusions of economic evaluations, (ii) risks relating to possible variations in reserves, grade, planned mining dilution and ore loss, or recovery rates and changes in project parameters as plans continue to be refined, (iii) the potential for delays in exploration or development activities or the completion of feasibility studies, (iv) risks related to commodity price and foreign exchange rate fluctuations, (v) risks related to failure to obtain adequate financing on a timely basis and on acceptable terms or delays in obtaining governmental approvals or in the completion of development or construction activities, and (vi) other risks and uncertainties related to the Company’s prospects, properties and business strategy. Investors are cautioned not to place undue reliance on these forward-looking statements that speak only as of the date hereof, and the Company does not undertake any obligation to revise and disseminate forward-looking statements to reflect events or circumstances after the date hereof, or to reflect the occurrence of or non-occurrence of any events.

Appendix 1 – Nevada Iron

Claim Name	Serial Number	Lead File Number	Legacy Serial Number	Legacy Lead File Number	Claim Type	County
HNVFE NO 1	NV101352514	NV101352514	NMC1093640	NMC1093640	MILL SITE	CHURCHILL
HNVFE NO 2	NV101352515	NV101352515	NMC1093641	NMC1093640	MILL SITE	CHURCHILL
HNVFE NO 3	NV101353474	NV101353474	NMC1093642	NMC1093640	MILL SITE	CHURCHILL
HNVFE NO 4	NV101353475	NV101353475	NMC1093643	NMC1093640	MILL SITE	CHURCHILL
HNVFE NO 5	NV101353476	NV101353476	NMC1093644	NMC1093640	MILL SITE	CHURCHILL
HNVFE NO 6	NV101353477	NV101353477	NMC1093645	NMC1093640	MILL SITE	CHURCHILL
HNVFE NO 7	NV101353478	NV101353478	NMC1093646	NMC1093640	MILL SITE	CHURCHILL
HNVFE NO 8	NV101353479	NV101353479	NMC1093647	NMC1093640	MILL SITE	CHURCHILL
HNVFE NO 9	NV101353480	NV101353480	NMC1093648	NMC1093640	MILL SITE	CHURCHILL
HNVFE NO 10	NV101353481	NV101353481	NMC1093649	NMC1093640	MILL SITE	CHURCHILL
HNVFE NO 11	NV101353482	NV101353482	NMC1093650	NMC1093640	MILL SITE	CHURCHILL
HNVFE NO 12	NV101353483	NV101353483	NMC1093651	NMC1093640	MILL SITE	CHURCHILL
HNVFE NO 13	NV101353484	NV101353484	NMC1093652	NMC1093640	MILL SITE	CHURCHILL
HNVFE NO 14	NV101353485	NV101353485	NMC1093653	NMC1093640	MILL SITE	CHURCHILL
HNVFE NO 15	NV101353486	NV101353486	NMC1093654	NMC1093640	MILL SITE	CHURCHILL
HNVFE NO 16	NV101353487	NV101353487	NMC1093655	NMC1093640	MILL SITE	CHURCHILL
HNVFE NO 17	NV101353488	NV101353488	NMC1093656	NMC1093640	MILL SITE	CHURCHILL
HNVFE NO 18	NV101353489	NV101353489	NMC1093657	NMC1093640	MILL SITE	CHURCHILL
HNVFE NO 26	NV101353490	NV101353490	NMC1093665	NMC1093640	MILL SITE	CHURCHILL
HNVFE NO 27	NV101353491	NV101353491	NMC1093666	NMC1093640	MILL SITE	CHURCHILL
HNVFE NO 28	NV101353492	NV101353492	NMC1093667	NMC1093640	MILL SITE	CHURCHILL
HNVFE NO 29	NV101353493	NV101353493	NMC1093668	NMC1093640	MILL SITE	CHURCHILL
HNVFE NO 30	NV101353494	NV101353494	NMC1093669	NMC1093640	MILL SITE	CHURCHILL
HNVFE NO 31	NV101354328	NV101354328	NMC1093670	NMC1093640	MILL SITE	CHURCHILL
HNVFE NO 32	NV101354329	VV101354329	NMC1093671	NMC1093640	MILL SITE	CHURCHILL
HNVFE NO 33	NV101354330	NV101354330	NMC1093672	NMC1093640	MILL SITE	CHURCHILL
HNVFE NO 34	NV101354331	NV101354331	NMC1093673	NMC1093640	MILL SITE	CHURCHILL
HNVFE NO 35	NV101354332	NV101354332	NMC1093674	NMC1093640	MILL SITE	CHURCHILL
HNVFE NO 36	NV101354333	NV101354333	NMC1093675	NMC1093640	MILL SITE	CHURCHILL
HNVFE NO 37	NV101354334	NV101354334	NMC1093676	NMC1093640	MILL SITE	CHURCHILL
HNVFE NO 38	NV101354335	NV101354335	NMC1093677	NMC1093640	MILL SITE	CHURCHILL
HNVFE NO 39	NV101354336	NV101354336	NMC1093678	NMC1093640	MILL SITE	CHURCHILL
HNVFE NO 40	NV101354337	NV101354337	NMC1093679	NMC1093640	MILL SITE	CHURCHILL
HNVFE NO 41	NV101354338	NV101354338	NMC1093680	NMC1093640	MILL SITE	CHURCHILL
HNVFE NO 42	NV101354339	NV101354339	NMC1093681	NMC1093640	MILL SITE	CHURCHILL
HNVFE NO 43	NV101354340	NV101354340	NMC1093682	NMC1093640	MILL SITE	CHURCHILL
HNVFE NO 44	NV101354341	NV101354341	NMC1093683	NMC1093640	MILL SITE	CHURCHILL
HNVFE NO 45	VV101354342	NV101354342	NMC1093684	NMC1093640	MILL SITE	CHURCHILL
HNVFE NO 46	NV101354343	NV101354343	NMC1093685	NMC1093640	MILL SITE	CHURCHILL
HNVFE NO 47	NV101354344	NV101354344	NMC1093686	NMC1093640	MILL SITE	CHURCHILL
HNVFE NO 48	NV101354345	NV101354345	NMC1093687	NMC1093640	MILL SITE	CHURCHILL
KMD 1	NV101311221	NV101311221	NMC956471	NMC956471	LODE	CHURCHILL
KMD 2	NV101311222	NV101311222	NMC956472	NMC956471	LODE	CHURCHILL
KMD 3	NV101311223	NV101311223	NMC956473	NMC956471	LODE	CHURCHILL
KMD 4	NV101311224	NV101311224	NMC956474	NMC956471	LODE	CHURCHILL
KMD 5	NV101311225	NV101311225	NMC956475	NMC956471	LODE	CHURCHILL
KMD 6	WV101311226	NV101311226	NMC956476	NMC956471	LODE	CHURCHILL
KMD 7	NV101311227	NV101311227	NMC956477	NMC956471	LODE	CHURCHILL
KMD 8	NV101311228	NV101311228	NMC956478	NMC956471	LODE	CHURCHILL
KMD 9	NV101312389	NV101312389	NMC956479	NMC956471	LODE	CHURCHILL
KMD #10	NV101427082	NV101427082	NMC1049632	NMC1049632	LODE	CHURCHILL
KMD 11	NV101312390	NV101312390	NMC956481	NMC956471	LODE	CHURCHILL
KMD 12	NV101312391	NV101312391	NMC956482	NMC956471	LODE	CHURCHILL
KMD 13	NV101312392	NV101312392	NMC956483	NMC956471	LODE	CHURCHILL
KMD 14	NV101312393	NV101312393	NMC956484	NMC956471	LODE	CHURCHILL
KMD 15	NV101312394	NV101312394	NMC956485	NMC956471	LODE	CHURCHILL
KMD 16	NV101312395	NV101312395	NMC956486	NMC956471	LODE	CHURCHILL
KMD 17	NV101312396	NV 101312396	NMC956487	NMC956471	LODE	CHURCHILL

KMD 18	NV101312397	NV101312397	NMC956488	NMC956471	LODE	CHURCHILL
KMD 19	NV101312422	NV101312422	NMC956489	NMC956471	LODE	CHURCHILL
KMD 20	NV101312423	NV101312423	NMC956490	NMC956471	LODE	CHURCHILL
KMD 21	NV101312424	NV101312424	NMC956491	NMC956471	LODE	CHURCHILL
KMD 22	NV101312425	NV101312425	NMC956492	NMC956471	LODE	CHURCHILL
KMD 23	NV101312426	NV101312426	VMC956493 AC956	NMC956471	LODE	CHURCHILL
KMD 24	NV101313638	NV101313638	NMC956494	NMC956471	LODE	CHURCHILL
KMD 25	NV101313639	NV101313639	NMC956495	NMC956471	LODE	CHURCHILL
KMD 26	NV101313640	NV101313640	NMC956496	NMC956471	LODE	CHURCHILL
KMD 27	NV101313641	NV101313641	UMC956497	NMC956471	LODE	CHURCHILL
KMD 28	NV101313642	NV101313642	NMC956498	NMC956471	LODE	CHURCHILL
KMD 29	NV101313643	NV101313643	NMC956499	NMC956471	LODE	CHURCHILL
KMD 30	NV101313644	NV101313644	VMC956500	NMC956471	LODE	CHURCHILL
KMD 31	NV101316057	NV101316057	NMC956501	NMC956471	LODE	CHURCHILL
KMD 32	NV101316058	NV101316058	NMC956502	NMC956471	LODE	CHURCHILL
KMD 33	NV101316059	NV101316059	NMC956503	NMC956471	LODE	CHURCHILL
KMD 34	NV101316060	NV101316060	NMC956504	NMC956471	LODE	CHURCHILL
KMD 35	NV101316061	NV101316061	NMC956505	NMC956471	LODE	CHURCHILL
KMD 36	NV101316062	NV101316062	NMC956506	NMC956471	LODE	CHURCHILL
KMD 37	NV101316063	NV101316063	NMC956507	NMC956471	LODE	CHURCHILL
KMD 38	NV101316064	NV101316064	NMC956508	NMC956471	LODE	CHURCHILL
KMD 39	NV101316065	NV101316065	NMC956509	NMC956471	LODE	CHURCHILL
KMD 40	NV101316066	NV101316066	NMC956510	NMC956471	LODE	CHURCHILL
KMD 41	NV101317202	NV101317202	NMC956511	NMC956471	LODE	CHURCHILL
KMD 42	NV101317203	NV101317203	NMC956512	NMC956471	LODE	CHURCHILL
KMD 43	NV101317204	VV101317204	NMC956513	NMC956471	LODE	CHURCHILL
KMD 44	NV101317205	NV101317205	NMC956514	NMC956471	LODE	CHURCHILL
KMD 45	NV101317206	NV101317206	NMC956515	NMC956471	LODE	CHURCHILL
KMD 46	NV101317207	NV101317207	NMC956516	NMC956471	LODE	CHURCHILL
KMD 47	NV101317208	NV101317208	NMC956517	NMC956471	LODE	CHURCHILL
KMD 48	NV101317209	NV101317209	NMC956518	NMC956471	LODE	CHURCHILL
KMD 49	NV101318424	NV101318424	NMC956519	NMC956471	LODE	CHURCHILL
KMD 50	NV101318425	NV101318425	NMC956520	NMC956471	LODE	CHURCHILL
KMD 51	NV101318426	NV101318426	NMC956521	NMC956471	LODE	CHURCHILL
KMD 52	NV101318427	NV101318427	NMC956522	NMC956471	LODE	CHURCHILL
KMD 53	VV101318428	NV101318428	NMC956523	NMC956471	LODE	CHURCHILL
KMD 54	NV101318429	NV101318429	NMC956524	NMC956471	LODE	CHURCHILL
KMD 55	NV101318430	NV101318430	NMC956525	NMC956471	LODE	CHURCHILL
KMD 56	NV101318431	NV101318431	NMC956526	NMC956471	LODE	CHURCHILL
KMD #57	NV101427083	NV101427083	NMC1049633	NMC1049632	LODE	CHURCHILL
KMD #58	NV101427084	NV101427084	NMC1049634	NMC1049632	LODE	CHURCHILL
KMD 59	NV101651660	NV101651660	NMC979428	NMC979387	LODE	CHURCHILL
KMD 60	NV101651661	NV101651661	NMC979429	NMC979387	LODE	CHURCHILL
KMD 61	NV101651662	NV101651662	NMC979430	NMC979387	LODE	CHURCHILL
KMD 62	NV101651663	NV101651663	NMC979431	NMC979387	LODE	CHURCHILL
KMD 63	NV101651664	NV101651664	NMC979432	NMC979387	LODE	CHURCHILL
KMD 64	NV101651665	NV101651665	NMC979433	NMC979387	LODE	CHURCHILL
KMD 65	NV101651666	NV101651666	NMC979434	NMC979387	LODE	CHURCHILL
KMD 66	NV101651667	NV101651667	NMC979435	NMC979387	LODE	CHURCHILL
KMD 67	NV101651668	NV101651668	NMC979436	NMC979387	LODE	CHURCHILL
KMD 68	NV101651669	NV101651669	NMC979437	NMC979387	LODE	CHURCHILL
KMD 69	VV101651670	NV101651670	NMC979438	NMC979387	LODE	CHURCHILL
KMD 70	NV101651671	NV101651671	NMC979439	NMC979387	LODE	CHURCHILL
NVFE 1	NV101428005	NV101428005	NMC1045283	NMC1045283	LODE	CHURCHILL
NVFE 2	NV101428006	NV101428006	NMC1045284	NMC1045283	LODE	CHURCHILL
NVFE 3	NV101428007	NV101428007	NMC1045285	NMC1045283	LODE	CHURCHILL
NVFE 4	NV101428008	VV101428008	NMC1045286	NMC1045283	LODE	CHURCHILL
NVFE 5	NV101428009	NV101428009	NMC1045287	NMC1045283	LODE	CHURCHILL
NVFE 6	NV101428010	NV101428010	NMC1045288	NMC1045283	LODE	CHURCHILL
NVFE 7	NV101428011	NV101428011	NMC1045289	NMC1045283	LODE	CHURCHILL
NVFE 8	NV101428012	NV101428012	NMC1045290	NMC1045283	LODE	CHURCHILL
NVFE 9	NV101544516	NV101544516	NMC1068429	NMC1068429	LODE	CHURCHILL
NVFE 10	NV101544517	NV101544517	NMC1068430	NMC1068429	LODE	CHURCHILL

NVFE 11	NV101544518	NV101544518	NMC1068431	NMC1068429	LODE	CHURCHILL
NVFE 12	NV101544519	NV101544519	NMC1068432	NMC1068429	LODE	CHURCHILL
NVFE 13	NV101544520	NV101544520	NMC1068433	NMC1068429	LODE	CHURCHILL
NVFE 14	NV101544521	NV101544521	NMC1068434	NMC1068429	LODE	CHURCHILL
NVFE 15	NV101544522	NV101544522	NMC1068435	NMC1068429	LODE	CHURCHILL
NVFE 16	NV101544523	NV101544523	NMC1068436	NMC1068429	LODE	CHURCHILL
NVFE 17	NV101544524	NV101544524	NMC1068437	NMC1068429	LODE	CHURCHILL
NVFE 18	NV101544525	NV101544525	NMC1068438	NMC1068429	LODE	CHURCHILL
NVFE 19	NV101544526	NV101544526	NMC1068439	NMC1068429	LODE	CHURCHILL
NVFE 20	NV101508746	NV101508746	NMC1075996	NMC1075996	LODE	CHURCHILL
NVFE 21	NV101508747	NV101508747	NMC1075997	NMC1075996	LODE	CHURCHILL
NVFE 22	NV101508748	NV101508748	NMC1075998	NMC1075996	LODE	CHURCHILL
NVFE 23	NV101508749	NV101508749	NMC1075999	NMC1075996	LODE	CHURCHILL
NVFE 24	NV101508750	NV101508750	NMC1076000	NMC1075996	LODE	CHURCHILL
NVFE 25	NV101508751	NV101508751	NMC1076001	NMC1075996	LODE	CHURCHILL
NVFE 26	NV101508752	NV101508752	NMC1076002	NMC1075996	LODE	CHURCHILL
NVFE 27	NV101508753	NV101508753	NMC1076003	NMC1075996	LODE	CHURCHILL
NVFE 28	NV101508754	NV101508754	NMC1076004	NMC1075996	LODE	CHURCHILL
NVFE 29	NV101508755	NV101508755	NMC1076005	NMC1075996	LODE	CHURCHILL
NVFE 30	NV101508756	NV101508756	NMC1076006	NMC1075996	LODE	CHURCHILL
NVFE 31	NV101508757	NV101508757	NMC1076007	NMC1075996	LODE	CHURCHILL
NVFE 32	W101508758	NV101508758	NMC1076008	NMC1075996	LODE	CHURCHILL
NVFE 33	NV101508759	NV101508759	NMC1076009	NMC1075996	LODE	CHURCHILL
NVFE 34	NV101508760	NV101508760	NMC1076010	NMC1075996	LODE	CHURCHILL
NVFE 35	NV101508761	NV101508761	NMC1076011	NMC1075996	LODE	CHURCHILL
NVFE 36	NV101508762	NV101508762	NMC1076012	NMC1075996	LODE	CHURCHILL
NVFE 37	NV101509977	NV101509977	NMC1076013	NMC1075996	LODE	CHURCHILL
NVFE 38	NV101509978	NV101509978	NMC1076014	NMC1075996	LODE	CHURCHILL
NVFE 39	NV101509979	NV101509979	NMC1076015	NMC1075996	LODE	CHURCHILL
NVFE 40	NV101509980	NV101509980	NMC1076016	NMC1075996	LODE	CHURCHILL
NVFE 41	NV101509981	NV101509981	NMC1076017	NMC1075996	LODE	CHURCHILL
NVFE 42	NV101509982	NV101509982	NMC1076018	NMC1075996	LODE	CHURCHILL
NVFE 43	NV101509983	NV101509983	NMC1076019	NMC 1075996	LODE	CHURCHILL
NVFE 44	NV101509984	NV101509984	NMC1076020	NMC 1075996	LODE	CHURCHILL
NVFE 45	NV101509985	NV101509985	NMC1076021	NMC1075996	LODE	CHURCHILL
NVFE 46	NV101509986	NV101509986	NMC1076022	NMC1075996	LODE	CHURCHILL
NVFE 47	NV101509987	NV101509987	NMC1076023	NMC1075996	LODE	CHURCHILL
NVFE 48	NV101509988	NV101509988	NMC1076024	NMC1075996	LODE	CHURCHILL
NVFE 49	NV101509989	NV101509989	NMC1076025	NMC1075996	LODE	CHURCHILL
NVFE 50	NV101509990	NV101509990	NMC1076026	NMC1075996	LODE	CHURCHILL
NVFE 51	NV101509991	NV101509991	NMC1076027	NMC1075996	LODE	CHURCHILL
NVFE 52	NV101509992	NV101509992	NMC1076028	NMC1075996	LODE	CHURCHILL
NVFE 53	NV101509993	NV101509993	NMC1076029	NMC1075996	LODE	CHURCHILL
NVFE 54	NV101509994	NV101509994	NMC1076030	NMC1075996	LODE	CHURCHILL
NVFE 55	NV101509995	NV101509995	NMC1076031	NMC1075996	LODE	CHURCHILL
NVFE 56	NV101509996	NV101509996	NMC1076032	NMC1075996	LODE	CHURCHILL
NVFE 57	VV101509997	NV101509997	NMC1076033	NMC1075996	LODE	CHURCHILL
NVFE 58	NV101341295	NV101341295	NMC1076034	NMC1075996	LODE	CHURCHILL
NVFE 59	NV101341296	NV101341296	NMC1076035	NMC1075996	LODE	CHURCHILL
NVFE 60	NV101341297	NV101341297	NMC1076036	NMC1075996	LODE	CHURCHILL
NVFE 61	NV101341298	NV101341298	NMC1076037	NMC1075996	LODE	CHURCHILL
NVFE 62	NV101341299	NV101341299	NMC1076038	NMC1075996	LODE	CHURCHILL
NVFE 63	NV101341300	NV101341300	NMC1076039	NMC1075996	LODE	CHURCHILL
NVFE 64	NV101341301	NV101341301	NMC1076040	NMC1075996	LODE	CHURCHILL
NVFE 65	NV101341302	NV101341302	NMC1076041	NMC1075996	LODE	CHURCHILL
NVFE 66	NV101341303	NV101341303	NMC1076042	NMC1075996	LODE	CHURCHILL
NVFE 67	NV101341304	NV101341304	NMC1076043	NMC1075996	LODE	CHURCHILL
NVFE 68	NV101341305	NV101341305	NMC1076044	NMC1075996	LODE	CHURCHILL
NVFE 69	NV101341306	NV101341306	NMC1076045	NMC1075996	LODE	CHURCHILL
NVFE 70	NV101341307	NV101341307	NMC1076046	NMC1075996	LODE	CHURCHILL
NVFE 71	NV101341308	NV101341308	NMC1076047	NMC1075996	LODE	CHURCHILL
NVFE 72	NV101341309	NV101341309	NMC1076048	NMC1075996	LODE	CHURCHILL
NVFE 73	NV101341310	NV101341310	NMC1076049	NMC1075996	LODE	CHURCHILL

NVFE 74	NV101341311	NV101341311	NMC1076050	NMC1075996	LODE	CHURCHILL
NVFE 75	NV101341312	NV101341312	NMC1076051	NMC1075996	LODE	CHURCHILL
NVFE 76	NV101341313	NV101341313	NMC1076052	NMC1075996	LODE	CHURCHILL
NVFE 77	NV101341314	NV101341314	NMC1076053	NMC1075996	LODE	CHURCHILL
NVFE 78	NV101341315	NV101341315	NMC1076054	NMC1075996	LODE	CHURCHILL
NVFE 79	NV101342502	NV101342502	NMC1076055	NMC1075996	LODE	CHURCHILL
NVFE 80	NV101342503	NV101342503	NMC1076056	NMC1075996	LODE	CHURCHILL
NVFE 81	NV101342504	NV101342504	NMC1076057	NMC1075996	LODE	CHURCHILL
NVFE 82	NV101342505	NV101342505	NMC1076058	NMC1075996	LODE	CHURCHILL
NVFE 83	NV101342506	NV101342506	NMC 1076059	NMC1075996	LOD	CHURCHILL
NVFE 84	NV101342507	NV101342507	NMC1076060	NMC1075996	LODI	CHURCHILL
NVFE 85	NV101342508	NV101342508	NMC1076061	NMC1075996	LODE	CHURCHILL
NVFE 86	NV101342509	NV101342509	NMC1076062	NMC1075996	LODE	CHURCHILL
NVFE 87	NV101342510	NV101342510	NMC1076063	NMC1075996	LODE	CHURCHILL
NVFE 88	NV101342511	NV101342511	NMC1076064	NMC1075996	LODE	CHURCHILL
NVFE 89	NV101342512	NV101342512	NMC1076065	NMC1075996	LODE	CHURCHILL
NVFE 90	NV101342513	NV101342513	NMC1076066	NMC1075996	LODE	CHURCHILL
NVFE 91	NV101342514	NV101342514	NMC1076067	NMC1075996	LODE	CHURCHILL
NVFE 92	NV101342515	NV101342515	NMC1076068	NMC1075996	LODE	CHURCHILL
NVFE 93	NV101342516	NV101342516	NMC1076069	NMC1075996	LODE	CHURCHILL
NVFE 94	NV101342517	NV101342517	NMC1076070	NMC1075996	LODE	CHURCHILL
NVFE 95	NV101342518	NV101342518	NMC1076071	NMC1075996	LODE	CHURCHILL
NVFE 96	NV101342519	NV101342519	NMC1076072	NMC1075996	LODE	CHURCHILL
NVFE 97	NV101342520	NV101342520	NMC1076073	NMC1075996	LODE	CHURCHILL
NVFE 98	NV101342521	NV101342521	NMC1076074	NMC1075996	LODE	CHURCHILL
NVFE 99	NV101342522	NV101342522	NMC1076075	NMC1075996	.ODE	CHURCHILL
NVFE 100	NV101343785	NV101343785	NMC1076076	NMC1075996	ODE	CHURCHILL
NVFE 101	NV101343786	NV101343786	NMC1076077	NMC1075996	LODE	CHURCHILL
NVFE 102	NV101343787	NV101343787	NMC1076078	NMC1075996	LODE	CHURCHILL
NVFE 103	NV101343788	NV101343788	NMC1076079	NMC1075996	LODE	CHURCHILL
NVFE 104	NV101343789	NV101343789	NMC1076080	NMC1075996	LODE	CHURCHILL
NVFE 105	NV101343790	NV101343790	NMC1076081	NMC1075996	LODE	CHURCHILL
NVFE 106	VV101343791	VV101343791	NMC1076082	NMC1075996	LODE	CHURCHILL
NVFE 108	NV101343792	NV101343792	NMC1076083	NMC1075996	LODE	CHURCHILL
NVFE 109	NV101343793	NV101343793	NMC1076084	NMC1075996	LODE	CHURCHILL
NVFE 110	NV101343794	NV101343794	NMC1076085	NMC1075996	LODE	CHURCHILL
NVFE 111	NV101343795	NV101343795	NMC1076086	NMC1075996	LODE	CHURCHILL
NVFE 112	NV101343796	NV101343796	NMC1076087	NMC1075996	LODE	CHURCHILL
NVFE 113	NV101343797	NV101343797	NMC1076088	NMC1075996	LODE	CHURCHILL
NVFE 114	NV101343798	NV101343798	NMC1076089	NMC1075996	LODE	CHURCHILL
NVFE 115	NV101343799	NV101343799	NMC1076090	NMC1075996	LODE	CHURCHILL

Appendix 2 - EV Resources USA, Inc.

Claim Name	Serial Number	Lead File Number	Claim Type	City
NS 010	AZ105298048	AZ105298039	LODE CLAIM	RENO
NS 011	AZ105298049	AZ105298039	LODE CLAIM	RENO
NS 012	AZ105298050	AZ105298039	LODE CLAIM	RENO
NS 013	AZ105298051	AZ105298039	LODE CLAIM	RENO
NS 014	AZ105298052	AZ105298039	LODE CLAIM	RENO
NS 015	AZ105298053	AZ105298039	LODE CLAIM	RENO
NS 024	AZ105298062	AZ105298039	LODE CLAIM	RENO
NS 025	AZ105298063	AZ105298039	LODE CLAIM	RENO
NS 026	AZ105298064	AZ105298039	LODE CLAIM	RENO
NS 027	AZ105298065	AZ105298039	LODE CLAIM	RENO
NS 028	AZ105298066	AZ105298039	LODE CLAIM	RENO
NS 029	AZ105298067	AZ105298039	LODE CLAIM	RENO
NS 030	AZ105298068	AZ105298039	LODE CLAIM	RENO
NS 031	AZ105298069	AZ105298039	LODE CLAIM	RENO
NS 032	AZ105298070	AZ105298039	LODE CLAIM	RENO
NS 033	AZ105298071	AZ105298039	LODE CLAIM	RENO

NS 034	AZ105298072	AZ105298039	LODE CLAIM	RENO
NS 035	AZ105298073	AZ105298039	LODE CLAIM	RENO
NS 046	AZ105298084	AZ105298039	LODE CLAIM	RENO
NS 047	AZ105298085	AZ105298039	LODE CLAIM	RENO
NS 048	AZ105298086	AZ105298039	LODE CLAIM	RENO
NS 049	AZ105298087	AZ105298039	LODE CLAIM	RENO
NS 050	AZ105298088	AZ105298039	LODE CLAIM	RENO
NS 051	AZ105298089	AZ105298039	LODE CLAIM	RENO
NS 052	AZ105298090	AZ105298039	LODE CLAIM	RENO
NS 053	AZ105298091	AZ105298039	LODE CLAIM	RENO
NS 054	AZ105298092	AZ105298039	LODE CLAIM	RENO
NS 069	AZ105298107	AZ105298039	LODE CLAIM	RENO
NS 070	AZ105298108	AZ105298039	LODE CLAIM	RENO
GE-1	AZ105830294	AZ105830294	LODE CLAIM	RENO
GE-2	AZ105830295	AZ105830294	LODE CLAIM	RENO
GE-3	AZ105830296	AZ105830294	LODE CLAIM	RENO
GE-4	AZ105830297	AZ105830294	LODE CLAIM	RENO
GE-5	AZ105830298	AZ105830294	LODE CLAIM	RENO
GE-6	AZ105830299	AZ105830294	LODE CLAIM	RENO
GE-7	AZ105830300	AZ105830294	LODE CLAIM	RENO
GE-8	AZ105830301	AZ105830294	LODE CLAIM	RENO
GE-9	AZ105830302	AZ105830294	LODE CLAIM	RENO
GE-10	AZ105830303	AZ105830294	LODE CLAIM	RENO
GE-11	AZ105830304	AZ105830294	LODE CLAIM	RENO
GE-12	AZ105830305	AZ105830294	LODE CLAIM	RENO
GE-13	AZ105830306	AZ105830294	LODE CLAIM	RENO
GE-14	AZ105830307	AZ105830294	LODE CLAIM	RENO
GE-15	AZ105830308	AZ105830294	LODE CLAIM	RENO
GE-16	AZ105830309	AZ105830294	LODE CLAIM	RENO
GE-17	AZ105830310	AZ105830294	LODE CLAIM	RENO
GE-18	AZ105830311	AZ105830294	LODE CLAIM	RENO

Appendix 3 - Monomatapa Mining Services, Inc.

Claim Name	Serial Number	Lead File Number	Claim Type	City
GE-19	AZ106352070	AZ106352070	LODE CLAIM	ATALANTA
GE-20	AZ106352071	AZ106352070	LODE CLAIM	ATALANTA
GE-21	AZ106352072	AZ106352070	LODE CLAIM	ATALANTA
GE-22	AZ106352073	AZ106352070	LODE CLAIM	ATALANTA
GE-23	AZ106352074	AZ106352070	LODE CLAIM	ATALANTA
GE-24	AZ106352075	AZ106352070	LODE CLAIM	ATALANTA
GE-25	AZ106352076	AZ106352070	LODE CLAIM	ATALANTA
GE-26	AZ106352077	AZ106352070	LODE CLAIM	ATALANTA
GE-27	AZ106352078	AZ106352070	LODE CLAIM	ATALANTA
GE-28	AZ106352079	AZ106352070	LODE CLAIM	ATALANTA
GE-29	AZ106352080	AZ106352070	LODE CLAIM	ATALANTA
GE-30	AZ106352081	AZ106352070	LODE CLAIM	ATALANTA
GE-31	AZ106352082	AZ106352070	LODE CLAIM	ATALANTA
GE-32	AZ106352083	AZ106352070	LODE CLAIM	ATALANTA
GE-33	AZ106352084	AZ106352070	LODE CLAIM	ATALANTA
GE-34	AZ106352085	AZ106352070	LODE CLAIM	ATALANTA
GE-35	AZ106352086	AZ106352070	LODE CLAIM	ATALANTA
GE-36	AZ106352087	AZ106352070	LODE CLAIM	ATALANTA
GE-37	AZ106352088	AZ106352070	LODE CLAIM	ATALANTA
GE-38	AZ106352089	AZ106352070	LODE CLAIM	ATALANTA
GE-39	AZ106352090	AZ106352070	LODE CLAIM	ATALANTA
GE-40	AZ106352091	AZ106352070	LODE CLAIM	ATALANTA
GE-41	AZ106352092	AZ106352070	LODE CLAIM	ATALANTA
GE-42	AZ106352093	AZ106352070	LODE CLAIM	ATALANTA
GE-43	AZ106352094	AZ106352070	LODE CLAIM	ATALANTA
GE-44	AZ106352095	AZ106352070	LODE CLAIM	ATALANTA

GE-45	AZ106352096	AZ106352070	LODE CLAIM	ATALANTA
GE-46	AZ106352097	AZ106352070	LODE CLAIM	ATALANTA
GE-47	AZ106352098	AZ106352070	LODE CLAIM	ATALANTA
GE-48	AZ106352099	AZ106352070	LODE CLAIM	ATALANTA
GE-49	AZ106352100	AZ106352070	LODE CLAIM	ATALANTA
GE-50	AZ106352101	AZ106352070	LODE CLAIM	ATALANTA

Appendix 4 – Palmares Estudos Geologicos

No.	Serial Number	Substance	Municipality	City
1	860.187/2024	RARE EARTH	Bom Jardim de Goiás	MUNICÍPIOS DE GOIÁS
2	860.188/2024	RARE EARTH	Bom Jardim de Goiás	MUNICÍPIOS DE GOIÁS
3	860.189/2024	RARE EARTH	Bom Jardim de Goiás	MUNICÍPIOS DE GOIÁS
4	860.190/2024	RARE EARTH	Bom Jardim de Goiás	MUNICÍPIOS DE GOIÁS
5	860.191/2024	RARE EARTH	Piranhas	MUNICÍPIOS DE GOIÁS
6	860.192/2024	RARE EARTH	Piranhas	MUNICÍPIOS DE GOIÁS
7	860.193/2024	RARE EARTH	Córrego do Ouro	MUNICÍPIOS DE GOIÁS
8	860.194/2024	RARE EARTH	Piranhas	MUNICÍPIOS DE GOIÁS
9	860.195/2024	RARE EARTH	Piranhas	MUNICÍPIOS DE GOIÁS
10	860.196/2024	RARE EARTH	Piranhas	MUNICÍPIOS DE GOIÁS
11	860.197/2024	RARE EARTH	Piranhas	MUNICÍPIOS DE GOIÁS
12	860.198/2024	RARE EARTH	Piranhas	MUNICÍPIOS DE GOIÁS
13	860.199/2024	RARE EARTH	Montes Claros de Goiás	MUNICÍPIOS DE GOIÁS
14	860.200/2024	RARE EARTH	Montes Claros de Goiás	MUNICÍPIOS DE GOIÁS
15	860.202/2024	RARE EARTH	M. Claros de Goiás/Diorama	MUNICÍPIOS DE GOIÁS
16	860.203/2024	RARE EARTH	Montes Claros de Goiás	MUNICÍPIOS DE GOIÁS
17	860.204/2024	RARE EARTH	Montes Claros de Goiás	MUNICÍPIOS DE GOIÁS
18	860.205/2024	RARE EARTH	Montes Claros de Goiás	MUNICÍPIOS DE GOIÁS
19	860.206/2024	RARE EARTH	Montes Claros de Goiás	MUNICÍPIOS DE GOIÁS
20	860.207/2024	RARE EARTH	Montes Claros de Goiás	MUNICÍPIOS DE GOIÁS
21	860.208/2024	RARE EARTH	Montes Claros de Goiás	MUNICÍPIOS DE GOIÁS
22	860.209/2024	RARE EARTH	Montes Claros de Goiás	MUNICÍPIOS DE GOIÁS
23	860.210/2024	RARE EARTH	Montes Claros de Goiás	MUNICÍPIOS DE GOIÁS
24	860.211/2024	RARE EARTH	Montes Claros de Goiás	MUNICÍPIOS DE GOIÁS
25	860.212/2024	RARE EARTH	Jussara/Novo Brasil	MUNICÍPIOS DE GOIÁS
26	860.213/2024	RARE EARTH	Novo Brasil	MUNICÍPIOS DE GOIÁS
27	860.215/2024	RARE EARTH	Anicuns	MUNICÍPIOS DE GOIÁS
28	860.216/2024	RARE EARTH	Anicuns/Avelinópolis	MUNICÍPIOS DE GOIÁS
29	860.217/2024	RARE EARTH	Anicuns/Avelinópolis	MUNICÍPIOS DE GOIÁS
30	860.218/2024	RARE EARTH	Anicuns	MUNICÍPIOS DE GOIÁS
31	860.219/2024	RARE EARTH	Piracanjuba	MUNICÍPIOS DE GOIÁS
32	860.220/2024	RARE EARTH	Piracanjuba	MUNICÍPIOS DE GOIÁS
33	860.221/2024	RARE EARTH	Piracanjuba	MUNICÍPIOS DE GOIÁS
34	860.222/2024	RARE EARTH	Piracanjuba	MUNICÍPIOS DE GOIÁS
35	860.223/2024	RARE EARTH	Piracanjuba	MUNICÍPIOS DE GOIÁS
36	860.224/2024	RARE EARTH	Piracanjuba	MUNICÍPIOS DE GOIÁS
37	860.225/2024	RARE EARTH	Piracanjuba	MUNICÍPIOS DE GOIÁS
38	860.226/2024	RARE EARTH	Piracanjuba	MUNICÍPIOS DE GOIÁS
39	860.227/2024	RARE EARTH	Piracanjuba	MUNICÍPIOS DE GOIÁS
40	860.228/2024	RARE EARTH	Caldas Novas/Piracanjuba	MUNICÍPIOS DE GOIÁS
41	860.229/2024	RARE EARTH	Caldas Novas	MUNICÍPIOS DE GOIÁS
42	860.230/2024	RARE EARTH	Corumbaíba/Nova Aurora	MUNICÍPIOS DE GOIÁS
43	860.231/2024	RARE EARTH	Caldas Novas	MUNICÍPIOS DE GOIÁS
44	860.232/2024	RARE EARTH	Corumbaíba/Nova Aurora	MUNICÍPIOS DE GOIÁS
45	860.233/2024	RARE EARTH	Corumbaíba/Nova Aurora	MUNICÍPIOS DE GOIÁS
46	860.234/2024	RARE EARTH	Corumbaíba/Nova Aurora	MUNICÍPIOS DE GOIÁS

47	860.235/2024	RARE EARTH	Corumbaiba/Nova Aurora	MUNICIPIOS DE GOIÁS
48	860.236/2024	RARE EARTH	Corumbaiba/Nova Aurora	MUNICIPIOS DE GOIÁS
49	860.237/2024	RARE EARTH	Anhanguera/Cumari	MUNICIPIOS DE GOIÁS
50	860.238/2024	RARE EARTH	Anhanguera/Cumari	MUNICIPIOS DE GOIÁS
53	860.241/2024	RARE EARTH	Piranhas	MUNICIPIOS DE GOIÁS
54	860.242/2024	RARE EARTH	Montes Claros de Goiás	MUNICIPIOS DE GOIÁS
55	860.243/2024	RARE EARTH	Montes Claros de Goiás	MUNICIPIOS DE GOIÁS
56	860.247/2024	RARE EARTH	Piracanjuba	MUNICIPIOS DE GOIÁS
57	860.248/2024	RARE EARTH	Piracanjuba	MUNICIPIOS DE GOIÁS
58	861.939/2024	RARE EARTH	Pontalina	MUNICIPIOS DE GOIÁS
59	861.940/2024	RARE EARTH	Pontalina	MUNICIPIOS DE GOIÁS
60	861.941/2024	RARE EARTH	Pontalina	MUNICIPIOS DE GOIÁS
61	861.942/2024	RARE EARTH	Pontalina	MUNICIPIOS DE GOIÁS
62	861.943/2024	RARE EARTH	Pontalina	MUNICIPIOS DE GOIÁS
63	861.944/2024	RARE EARTH	Pontalina	MUNICIPIOS DE GOIÁS
64	870.198/2024	RARE EARTH	Itaquara	MUNICIPIOS DA BAHIA
65	870.199/2024	RARE EARTH	Itaquara/Jaguaquara	MUNICIPIOS DE GOIÁS
66	870.200/2024	RARE EARTH	Itaquara/Jaguaquara	MUNICIPIOS DE GOIÁS
67	870.201/2024	RARE EARTH	Itaquara/Jaguaquara	MUNICIPIOS DE GOIÁS
68	870.202/2024	RARE EARTH	Jaguaquara	MUNICIPIOS DE GOIÁS
69	870.203/2024	RARE EARTH	Itaquara/Jaguaquara	MUNICIPIOS DE GOIÁS
70	870.204/2024	RARE EARTH	Jaguaquara	MUNICIPIOS DE GOIÁS
71	870.205/2024	RARE EARTH	Jaguaquara	MUNICIPIOS DE GOIÁS
72	870.206/2024	RARE EARTH	Itaquara/Jaguaquara	MUNICIPIOS DE GOIÁS
73	870.207/2024	RARE EARTH	Jaguaquara	MUNICIPIOS DE GOIÁS
74	870.208/2024	RARE EARTH	Jaguaquara	MUNICIPIOS DE GOIÁS
75	870.209/2024	RARE EARTH	Jaguaquara	MUNICIPIOS DE GOIÁS
76	870.210/2024	RARE EARTH	Jaguaquara	MUNICIPIOS DE GOIÁS
77	870.212/2024	RARE EARTH	Jaguaquara	MUNICIPIOS DE GOIÁS
78	870.213/2024	RARE EARTH	Jequié	MUNICIPIOS DE GOIÁS
79	870.214/2024	RARE EARTH	Jequié	MUNICIPIOS DE GOIÁS
80	871.332/2020	RARE EARTH	Itaju do Colonia/Itapetinga	MUNICIPIOS DE GOIÁS
81	830.281/2024	RARE EARTH	Iguatama	MUNICIPIOS DE MINAS GERAIS
82	830.285/2024	RARE EARTH	Santa Rosa da Serra	MUNICIPIOS DE MINAS GERAIS
81	830.281/2024	RARE EARTH	Iguatama	MUNICIPIOS DE MINAS GERAIS
83	830.286/2024	RARE EARTH	Santa Rosa da Serra	MUNICIPIOS DE MINAS GERAIS
84	830.287/2024	RARE EARTH	Santa Rosa da Serra	MUNICIPIOS DE MINAS GERAIS
85	830.288/2024	RARE EARTH	Córrego Danta/Santa Rosa	MUNICIPIOS DE MINAS GERAIS
86	830.289/2024	RARE EARTH	Iguatama	MUNICIPIOS DE MINAS GERAIS
85	830.288/2024	RARE EARTH	Córrego Danta/Santa Rosa	MUNICIPIOS DE MINAS GERAIS
87	830.290/2024	RARE EARTH	Iguatama	MUNICIPIOS DE MINAS GERAIS
88	830.291/2024	RARE EARTH	Iguatama	MUNICIPIOS DE MINAS GERAIS
89	860.104/2026	RARE EARTH	Piracanjuba	MUNICIPIOS DE GOAIS
90	860.105/2026	RARE EARTH	Piracanjuba	MUNICIPIOS DE GOAIS
91	860.148/2026	RARE EARTH	Inpaneri	MUNICIPIOS DE GOAIS

Appendix 5 – Wyoming Critical Minerals, Inc.

Claim Name	Serial Number	Lead File Number	Location Date	T/R/S
WM 1	CO106759815	CO106759815	10/02/2025	20S 72W 13, 14, 23, 24
WM 2	CO106759816	CO106759815	10/02/2025	20S 72W 13,24
WM 3	CO106759817	CO106759815	10/02/2025	20S 72W 13, 24
WM 4	CO106759818	CO106759815	10/02/2025	20S 72W 13, 24
WM S	CO106759819	CO106759815	10/02/2025	20S 72W 13, 24

WM 6	CO106759820	CO106759815	10/02/2025	20S 72W 13, 24
WM 7	CO106759821	CO106759815	10/02/2025	20S 72W 13, 24
WM S	CO106759822	CO106759815	10/02/2025	20S 72W 13, 24
WM 9	CO106759823	CO106759815	10/02/2025	20S 72W 13, 24; 20S 71W 18, 19
WM 10	CO106759824	CO106759815	10/02/2025	20S 71W 18, 19
WM 11	CO106759825	CO106759815	10/02/2025	20S 71W 18, 19
WM 12	CO106759826	CO106759815	10/02/2025	20S 71W 18, 19
WM 13	CO106759827	CO106759815	10/02/2025	20S 71W 18, 19
WM 14	CO106759828	CO106759815	10/02/2025	20S 71W 18, 19
WM 15	CO106759829	CO106759815	10/02/2025	20S 71W 18, 19
WM 16	CO106759830	CO106759815	10/02/2025	20S 71W 18, 19
WM 17	CO106759831	CO106759815	10/02/2025	20S 71W 18, 19
WM 18	CO106759832	CO106759815	10/02/2025	20S 71W 17,18
WM 19	CO106759833	CO106759815	10/02/2025	20S 71W 17,18
WM 20	CO106759834	CO106759815	10/02/2025	20S 71W 17,18
WM 21	CO106759835	CO106759815	10/02/2025	20S 71W 17,18
WM 22	CO106759836	CO106759815	10/02/2025	20S 71W 17,18
WM 23	CO106759837	CO106759815	10/02/2025	20S 71W 17,18
WM 24	CO106759838	CO106759815	10/02/2025	20S 71W 17,18
WM 25	CO106759839	CO106759815	10/02/2025	20S 71W 17,18
WM 26	CO106759840	CO106759815	10/02/2025	20S 71W 17,18
WM 27	CO106759841	CO106759815	10/02/2025	220S 71W 17,18
WM 28	CO106759842	CO106759815	10/02/2025	20S 71W 13,18
WM 29	CO106759843	CO106759815	10/02/2025	20S72W 13
WM 30	CO106759844	CO106759815	10/02/2025	20S72W 13
WM 31	CO106759845	CO106759815	10/02/2025	20S72W 13
WM 32	CO106759846	CO106759815	10/02/2025	20S72W 13
WM 33	CO106759847	CO106759815	10/02/2025	20S72W 13
WM 34	CO106759848	CO106759815	10/02/2025	20S72W 13
WM 35	CO106759849	CO106759815	10/02/2025	20S72W 13
WM 36	CO106759850	CO106759815	10/02/2025	20S 72W 13,14
WM 37	CO106759851	CO106759815	10/02/2025	20S 72W 13,14
WM 38	CO106759852	CO106759815	10/02/2025	20S72W 13
WM 39	CO106759853	CO106759815	10/02/2025	20S72W 13
WM 40	CO106759854	CO106759815	10/02/2025	20S72W 13
WM 41	CO106759855	CO106759815	10/02/2025	20S72W 13
WM 42	CO106759856	CO106759815	10/02/2025	20S72W 13
WM 43	CO106759857	CO106759815	10/02/2025	20S72W 13
WM 44	CO106759858	CO106759815	10/02/2025	20S72W 13
WM 45	CO106759859	CO106759815	10/02/2025	20S72W 13; 20S71W 18
WM 46	CO106759860	CO106759815	10/02/2025	20S71W 18
WM 47	CO106759861	CO106759815	10/02/2025	20S71W 18
WM 48	CO106759862	CO106759815	10/02/2025	20S71W 18
WM 49	CO106759863	CO106759815	10/02/2025	20S71W 18
WM 50	CO106759864	CO106759815	10/02/2025	20S71W 18
WM 51	CO106759865	CO106759815	10/02/2025	20S71W 18
WM 52	CO106759866	CO106759815	10/02/2025	20S71W 18
WM 53	CO106759867	CO106759815	10/02/2025	20S71W 18
WM 54	CO106759868	CO106759815	10/02/2025	20S 71W 17,18
WM 55	CO106759869	CO106759815	10/02/2025	20S71W 7,8, 17,18
WM 56	CO106759870	CO106759815	10/02/2025	20S71W 7, 18
WM 57	CO106759871	CO106759815	10/02/2025	20S71W 7, 18
WM 58	CO106759872	CO106759815	10/02/2025	20S71W 7, 18
WM 59	CO106759873	CO106759815	10/02/2025	20S71W 7, 18
WM 60	CO106759874	CO106759815	10/02/2025	20S71W 7, 18
WM 61	CO106759875	CO106759815	10/02/2025	20S71W 7, 18
WM 62	CO106759876	CO106759815	10/02/2025	20S71W 7, 18
WM 63	CO106759877	CO106759815	10/02/2025	20S71W 7, 18
WM 64	CO106759878	CO106759815	10/09/2025	20S71W 7,18; 20S72W 12,13
WM 65	CO106759879	CO106759815	10/09/2025	20S 72W 12, 13

WM 66	CO106759880	CO106759815	10/09/2025	20S 72W 12, 13
WM 67	CO106759881	CO106759815	10/09/2025	20S 72W 12, 13
WM 68	CO106759882	CO106759815	10/09/2025	20S 72W 12, 13
WM 69	CO106759883	CO106759815	10/09/2025	20S 72W 12, 13
WM 70	CO106759884	CO106759815	10/09/2025	20S 72W 12, 13
WM 71	CO106759885	CO106759815	10/09/2025	20S 72W 12, 13
WM 72	CO106759886	CO106759815	10/09/2025	20S 72W 11, 12, 13, 14
WM 73	CO106759887	CO106759815	10/09/2025	20S72W 11
WM 74	CO106759888	CO106759815	10/09/2025	20S72W 11
WM 75	CO106759889	CO106759815	10/09/2025	20S72W 11
WM 76	CO106759890	CO106759815	10/09/2025	20S72W 11
WM 77	CO106759891	CO106759815	10/09/2025	20S72W 11,12
WM 78	CO106759892	CO106759815	10/09/2025	20S72W 12
WM 79	CO106759893	CO106759815	10/09/2025	20S72W 12
WM 80	CO106759894	CO106759815	10/09/2025	20S72W 12
WM 81	CO106759895	CO106759815	10/09/2025	20S72W 12
WM 82	CO106759896	CO106759815	10/09/2025	20S72W 12
WM 83	CO106759897	CO106759815	10/09/2025	20S72W 12
WM 84	CO106759898	CO106759815	10/09/2025	20S72W 12
WM 85	CO106759899	CO106759815	10/09/2025	20S 71W 7; 20S72W 12
WM 86	CO106759900	CO106759815	10/09/2025	20S71W 7
WM 87	CO106759901	CO106759815	10/09/2025	20S71W 7
WM 88	CO106759902	CO106759815	10/09/2025	20S71W 7
WM 89	CO106759903	CO106759815	10/09/2025	20S71W 7
WM 90	CO106759904	CO106759815	10/09/2025	20S71W 7
WM 91	CO106759905	CO106759815	10/09/2025	20S71W 7
WM 92	CO106759906	CO106759815	10/09/2025	20S71W 7
WM 93	CO106759907	CO106759815	10/09/2025	20S71W 7
WM 94	CO106759908	CO106759815	10/09/2025	20S71W 7; 20S72W 12
WM 95	CO106759909	CO106759815	10/09/2025	20S72W 12
WM 96	CO106759910	CO106759815	10/09/2025	20S72W 12
WM 97	CO106759911	CO106759815	10/09/2025	20S72W 12
WM 98	CO106759912	CO106759815	10/09/2025	20S72W 12
WM 99	CO106759913	CO106759815	10/09/2025	20S72W 12
WM 100	CO106759914	CO106759815	10/09/2025	20S72W 12
WM 101	CO106759915	CO106759815	10/09/2025	20S72W 12
WM 102	CO106759916	CO106759815	10/09/2025	20S 72W 11, 12
WM 103	CO106759917	CO106759815	10/09/2025	20S 72W 11, 12
WM 104	CO106759918	CO106759815	10/09/2025	20S72W 11
WM 105	CO106759919	CO106759815	10/09/2025	20S72W 11
WM 106	CO106759920	CO106759815	10/09/2025	20S72W 11
WM 107	CO106759921	CO106759815	10/09/2025	20S72W 11
WM 108	CO106759922	CO106759815	10/09/2025	20S72W 11
WM 109	CO106759923	CO106759815	10/09/2025	20S72W 11
WM 110	CO106759924	CO106759815	10/09/2025	20S 72W 11, 12
WM 111	CO106759925	CO106759815	10/09/2025	20S72W 12
WM 112	CO106759926	CO106759815	10/09/2025	20S72W 12
WM 113	CO106759927	CO106759815	10/09/2025	20S72W 12
WM 114	CO106759928	CO106759815	10/09/2025	20S72W 12
WM 115	CO106759929	CO106759815	10/09/2025	20S72W 12
WM 116	CO106759930	CO106759815	10/09/2025	20S72W 12
WM 117	CO106759931	CO106759815	10/09/2025	20S72W 12
WM 118	CO106759932	CO106759815	10/09/2025	20S72W 12
WM 119	CO106759933	CO106759815	10/09/2025	20S71W 6, 7; 20S72W 12
WM 120	CO106759934	CO106759815	10/09/2025	20S71W 6, 7
WM 121	CO106759935	CO106759815	10/09/2025	20S 71W 6, 7
WM 122	CO106759936	CO106759815	10/09/2025	20S71W 6, 7
WM 123	CO106759937	CO106759815	10/09/2025	20S72W 1, 12
WM 124	CO106759938	CO106759815	10/09/2025	20S72W 1, 12
WM 125	CO106759939	CO106759815	10/09/2025	20S72W 2, 11
WM 126	CO106759940	CO106759815	10/09/2025	20S72W 2, 11

Appendix 5B

Mining exploration entity or oil and gas exploration entity quarterly cash flow report

Name of entity

Magnum Mining and Exploration Limited

ABN

70 003 170 376

Quarter ended ("current quarter")

31 March 2026

Consolidated statement of cash flows		Current quarter \$A'000	Year to date (12 months) \$A'000
1.	Cash flows from operating activities		
1.1	Receipts from customers		
1.2	Payments for		
	(a) exploration & evaluation	(576)	(576)
	(b) development		
	(c) production		
	(d) staff costs	(3)	(3)
	(e) administration and corporate costs	(259)	(259)
1.3	Dividends received (see note 3)		
1.4	Interest received		
1.5	Interest and other costs of finance paid		
1.6	Income taxes paid		
1.7	Government grants and tax incentives		
1.8	Other (provide details if material)		
1.9	Net cash from / (used in) operating activities	(838)	(838)
2.	Cash flows from investing activities		
2.1	Payments to acquire or for:		
	(a) entities		
	(b) tenements	(114)	(114)
	(c) property, plant and equipment		
	(d) exploration & evaluation		

Appendix 5B

Mining exploration entity or oil and gas exploration entity quarterly cash flow report

Consolidated statement of cash flows	Current quarter \$A'000	Year to date (12 months) \$A'000
(e) investments		
(f) other non-current assets		
2.2 Proceeds from the disposal of:		
(a) entities		
(b) tenements		
(c) property, plant and equipment		
(d) investments		
(e) other non-current assets		
2.3 Cash flows from loans to other entities		
2.4 Dividends received (see note 3)		
2.5 Other (provide details if material)		
2.6 Net cash from / (used in) investing activities	(114)	(114)

3. Cash flows from financing activities		
3.1 Proceeds from issues of equity securities (excluding convertible debt securities)	1	1
3.2 Proceeds from issue of convertible debt securities		
3.3 Proceeds from exercise of options		
3.4 Transaction costs related to issues of equity securities or convertible debt securities		
3.5 Proceeds from borrowings		
3.6 Repayment of borrowings		
3.7 Transaction costs related to loans and borrowings	(29)	(29)
3.8 Dividends paid		
3.9 Other (provide details if material)		
3.10 Net cash from / (used in) financing activities	(28)	(28)

4. Net increase / (decrease) in cash and cash equivalents for the period	(980)	(980)
4.1 Cash and cash equivalents at beginning of period	5,862	5,862
4.2 Net cash from / (used in) operating activities (item 1.9 above)	(838)	(838)

Mining exploration entity or oil and gas exploration entity quarterly cash flow report

Consolidated statement of cash flows		Current quarter \$A'000	Year to date (12 months) \$A'000
4.3	Net cash from / (used in) investing activities (item 2.6 above)	(114)	(114)
4.4	Net cash from / (used in) financing activities (item 3.10 above)	(28)	(28)
4.5	Effect of movement in exchange rates on cash held	4	4
4.6	Cash and cash equivalents at end of period	4,886	4,886

5.	Reconciliation of cash and cash equivalents at the end of the quarter (as shown in the consolidated statement of cash flows) to the related items in the accounts	Current quarter \$A'000	Previous quarter \$A'000
5.1	Bank balances	4,886	5,862
5.2	Call deposits		
5.3	Bank overdrafts		
5.4	Other (provide details)		
5.5	Cash and cash equivalents at end of quarter (should equal item 4.6 above)	4,886	5,862

6.	Payments to related parties of the entity and their associates	Current quarter \$A'000
6.1	Aggregate amount of payments to related parties and their associates included in item 1	(57)
6.2	Aggregate amount of payments to related parties and their associates included in item 2	-

Note: if any amounts are shown in items 6.1 or 6.2, your quarterly activity report must include a description of, and an explanation for, such payments.

Mining exploration entity or oil and gas exploration entity quarterly cash flow report

7. Financing facilities	Total facility amount at quarter end \$A'000	Amount drawn at quarter end \$A'000
<i>Note: the term "facility" includes all forms of financing arrangements available to the entity. Add notes as necessary for an understanding of the sources of finance available to the entity.</i>		
7.1 Loan facilities	-	-
7.2 Credit standby arrangements	-	-
7.3 Other (please specify)	-	-
7.4 Total financing facilities	-	-
7.5 Unused financing facilities available at quarter end		-
7.6 Include in the box below a description of each facility above, including the lender, interest rate, maturity date and whether it is secured or unsecured. If any additional financing facilities have been entered into or are proposed to be entered into after quarter end, include a note providing details of those facilities as well.		

8. Estimated cash available for future operating activities	\$A'000
8.1 Net cash from / (used in) operating activities (item 1.9)	(838)
8.2 (Payments for exploration & evaluation classified as investing activities) (item 2.1(d))	
8.3 Total relevant outgoings (item 8.1 + item 8.2)	(838)
8.4 Cash and cash equivalents at quarter end (item 4.6)	4,886
8.5 Unused finance facilities available at quarter end (item 7.5)	-
8.6 Total available funding (item 8.4 + item 8.5)	4,886
8.7 Estimated quarters of funding available (item 8.6 divided by item 8.3)	5.83
<i>Note: if the entity has reported positive relevant outgoings (i.e. a net cash inflow) in item 8.3, answer item 8.7 as "N/A". Otherwise, a figure for the estimated quarters of funding available must be included in item 8.7.</i>	
8.8 If item 8.7 is less than 2 quarters, please provide answers to the following questions:	
8.8.1 Does the entity expect that it will continue to have the current level of net operating cash flows for the time being and, if not, why not?	
Answer: NA.	
8.8.2 Has the entity taken any steps, or does it propose to take any steps, to raise further cash to fund its operations and, if so, what are those steps and how likely does it believe that they will be successful?	
Answer: NA.	
8.8.3 Does the entity expect to be able to continue its operations and to meet its business objectives and, if so, on what basis?	
Answer: NA.	
<i>Note: where item 8.7 is less than 2 quarters, all of questions 8.8.1, 8.8.2 and 8.8.3 above must be answered.</i>	

Compliance statement

- 1 This statement has been prepared in accordance with accounting standards and policies which comply with Listing Rule 19.11A.
- 2 This statement gives a true and fair view of the matters disclosed.

30 April 2026

Date:

The Board of Directors.

Authorised by:

(Name of body or officer authorising release – see note 4)

Notes

1. This quarterly cash flow report and the accompanying activity report provide a basis for informing the market about the entity's activities for the past quarter, how they have been financed and the effect this has had on its cash position. An entity that wishes to disclose additional information over and above the minimum required under the Listing Rules is encouraged to do so.
2. If this quarterly cash flow report has been prepared in accordance with Australian Accounting Standards, the definitions in, and provisions of, *AASB 6: Exploration for and Evaluation of Mineral Resources* and *AASB 107: Statement of Cash Flows* apply to this report. If this quarterly cash flow report has been prepared in accordance with other accounting standards agreed by ASX pursuant to Listing Rule 19.11A, the corresponding equivalent standards apply to this report.
3. Dividends received may be classified either as cash flows from operating activities or cash flows from investing activities, depending on the accounting policy of the entity.
4. If this report has been authorised for release to the market by your board of directors, you can insert here: "By the board". If it has been authorised for release to the market by a committee of your board of directors, you can insert here: "By the [name of board committee – e.g. Audit and Risk Committee]". If it has been authorised for release to the market by a disclosure committee, you can insert here: "By the Disclosure Committee".
5. If this report has been authorised for release to the market by your board of directors and you wish to hold yourself out as complying with recommendation 4.2 of the ASX Corporate Governance Council's *Corporate Governance Principles and Recommendations*, the board should have received a declaration from its CEO and CFO that, in their opinion, the financial records of the entity have been properly maintained, that this report complies with the appropriate accounting standards and gives a true and fair view of the cash flows of the entity, and that their opinion has been formed on the basis of a sound system of risk management and internal control which is operating effectively.